

EDUCATION



IMPACTING OUR FUTURE GENERATIONS

WHEN IT COMES TO EDUCATION, MISSISSIPPI IS MAKING THE GRADE. IN FACT, OUR STATE ACHIEVED THE NUMBER ONE SPOT IN THE NATION FOR GAINS ON THE 2019 NATIONAL ASSESSMENT OF EDUCATIONAL PROGRESS (NAEP), KNOWN AS THE NATION’S REPORT CARD. NUMBER ONE!

So, to say Mississippi has made incredible strides of late in improving and enhancing education may be an understatement.

Since 2016, schools and districts earning an A have more than doubled, with the number of A-rated schools jumping from 88 to 196 and A-rated districts up from 14 to 31 in 2019. Our graduation rates surpassed the national average in 2020 and reached an all-time high of 87.7% in 2021.

Workforce training continues to be a focus due to its contributions to our economy. A 2020 Mississippi Association of Community & Junior Colleges economic impact study revealed that community colleges and their students have a multi-billion-dollar impact on Mississippi’s economy, generating an estimated \$2.1 billion in wages and salaries, over \$250 million in state and local tax revenue, and nearly \$4 billion in state gross domestic product.

Also making an impact on the state is advanced research. Mississippi is home to four Carnegie Foundation-rated research universities. Jackson State University conducts research ranging from cyber security and environmental science to STEM education and data-enabled science. Research conducted at Mississippi State University includes aerospace engineering, unmanned aircraft systems, agriculture, and social sciences. The University of Mississippi conducts research in areas ranging from biomedical and pharmaceutical to public policy and wireless communication. And research at the University of Southern Mississippi includes ocean science and engineering, polymer science and engineering, and sports venue safety and security.



AN UNFORESEEN CHALLENGE

Catastrophic events are often catalysts for change. For education, the COVID-19 pandemic proved this point.

Facing a health crisis never seen in this lifetime, students and teachers had to adjust, adjust again, and adjust again. Sondra Hinton, who teaches 8th grade English and Pre-AP English at Center Hill Middle School in Olive Branch, explained it best.

“Although a great deal of apprehension and fear accompanied the rapid implementation of virtual learning, Mississippi stepped up and accepted the challenge,” said Hinton. “I have never been more proud to be a Mississippi educator.”

Quarantines forced remote learning, which meant parents had to step in and help guide their children at home. The pandemic also created an immediate need for access to more laptops and mobile devices, plus broadband internet access in rural areas. Mississippi is working to fill these gaps so our children may continue to learn, regardless of circumstances.

“One bright spot is the access to technology that will forever change the face of education in our state,” said Hinton. “We will be true 21st-century learners.”



“I was overwhelmed with pride with how my Mississippi rose to meet the challenges ... Seeing Mississippi educators take on this pandemic and refuse to let it extinguish learning is noble, commendable, and something I will never forget.”

Sondra Hinton

Teacher | Center Hill Middle School | Olive Branch



EDUCATION

Public education, as established in Article 8 of the Mississippi Constitution of 1890 and as outlined in Miss. Code Ann. Title 37, is authorized, maintained, and supported by tax revenue appropriated by the Mississippi Legislature.

Mississippi Department of Education 23

School District Listings and Information 25

Special State Schools 36

Mississippi Community Colleges. 37

Institutions of Higher Learning 49

 Alcorn State University 52

 Delta State University 53

 Jackson State University. 55

 Mississippi State University. 57

 Mississippi University for Women. 59

 Mississippi Valley State University. 61

 University of Mississippi 63

 University of Southern Mississippi. 64

Mississippi University Enrollment and Statistics. 66

K-12 School and District Distinctions. 70

MISSISSIPPI DEPARTMENT OF EDUCATION

359 N. W. St., Jackson 39201
P.O. Box 771, Jackson 39205
(601) 359-3513/f(601) 432-6480
www.mde.k12.ms.us
info@mde.k12.ms.us

The Mississippi Department of Education (MDE) administers resources and support to public schools in the State. The Mississippi Board of Education selects the State Superintendent of Education, chooses public education policies, and supervises the MDE. The Mississippi Department of Education enforces laws on the federal and state level and distributes funds on the state and federal level. They also ensure educators are appropriately licensed.

The Mississippi Department of Education is committed to securing a future for each child and improving education opportunities for all students. In order for this to happen, teachers and administrators must give students multiple ways to succeed.

The Mississippi Board of Education's vision is "to create a world-class educational system that gives students the knowledge and skills to be successful in college and the workforce, and to flourish as parents and citizens." The Board's mission is "to provide leadership through the development of policy and accountability systems so that all students are prepared to compete in the global community."

The Mississippi State Board of Education created a Strategic Plan in 2016. The Board's strategic goals focus on success for all aspects of Mississippi's public education system, including students, classrooms, schools, and districts. There are six goals the Board created in their strategic plan: 1) all students proficient and showing growth in all assessed areas; 2) every student graduates from high school and is ready for college and career; 3) every child has access to a high-quality education program; 4) every school has effective teachers and leaders; 5) every community effectively uses a world-class data system to improve student outcomes; and 6) every school and district is rated "C" or higher.





CAREY M. WRIGHT, ED.D.

State Superintendent of Education

Offering more than 35 years of vast experience in the field of education, Dr. Carey M. Wright is currently the State Superintendent of Education for Mississippi. She has served as the Chief Academic Officer for the District of Columbia Public Schools as well as the Deputy Chief for the Office of Teaching and Learning, providing leadership for PK-12 education by managing the offices of Curriculum and Instruction, Professional Development, Early Childhood Education, College and Career Readiness, Youth Engagement, Bilingual Education, Out of School Time, School Counseling, Educational Technology, Gifted and Talented, and Library Media Services. After implementing a policy requiring four Advanced Placement courses to be offered in all high schools, student participation increased more than 25% and the number of students passing at least one AP exam increased over 85%. The total number of AP exams receiving passing scores increased 64%. In addition, African-American student performance on AP exams increased 86%, and Hispanic student performance increased 184%.

From 2003 to 2009, Dr. Wright served as the Associate Superintendent for the Office of Special Education and Student Services for the Montgomery County Public Schools in Maryland. In her capacity as associate superintendent she was responsible for student services for 150,000 students and special education programming for 17,000 students with disabilities, managing a budget of \$325 million, overseeing nonpublic placements and alternative programs, providing special education staffing for 200 schools, the provision of K-12 school counseling, psychological services, pupil personnel services, and the administration of the International Student Admission Office. Under Dr. Wright's leadership, the percent of special education students being educated in the general education classroom increased from 53% to 67%. During the last four years of her tenure, special education student proficiency on state reading and math assessments increased between 13 and 34 points at the elementary, middle, and high school levels. The biggest gains occurred in high schools, where student proficiency increased by 30 points in reading and 34 points in math.

Dr. Wright spent the majority of her career in Howard County Public Schools, also located in Maryland. In Howard County, Dr. Wright was a teacher, a principal for fifteen years, and the Director of Special Education and Student Services. She began her career in Prince George's County Public Schools in Maryland, serving as a teacher.

Dr. Wright has been recognized as an outstanding educator by the National Center for Culturally Responsive Systems, nominated twice for The Washington Post Outstanding Principal Award, and awarded the Howard County Chamber of Commerce Outstanding Educator of the Year.

Dr. Wright obtained her bachelor, master, and doctoral degrees from the University of Maryland, College Park. She currently resides in Madison County, Mississippi.

SCHOOL DISTRICT LISTINGS AND INFORMATION

Aberdeen School District (*Monroe County*)

Jeff Clay, Superintendent
 jclay@asdms.us
 P.O. Box 607, Aberdeen 39730
 (662) 369-4682/f(662) 369-0987
 www.asdms.us

Alcorn School District (*Alcorn County*)

Brandon Quinn, Interim Superintendent
 bqunn@alcornschools.org
 P.O. Box 1420, Corinth 38835
 (662) 286-5591/f(662) 286-7766
 www.alcornschools.org

Amite County School District

Don Cuevas, Superintendent
 dcuevas@amite.k12.ms.us
 P.O. Box 378, Liberty 39645
 (601) 657-4361 ext. 300/f(601) 657-4291
 www.amite.k12.ms.us

Amory School District (*Monroe County*)

Mr. Ken Byars, Superintendent
 kbyars@amoryschools.com
 124 N. Main St., P.O. Box 330
 Amory 38821
 (662) 256-5991/f(662) 256-6302
 www.amoryschools.com

Attala County School District

Kyle Hammond, Superintendent
 khammond@attala.k12.ms.us
 100 Courthouse Bldg., Ste. 3
 Kosciusko 39090
 (662) 289-2801/f(662) 289-2804
 www.attala.k12.ms.us

Baldwyn Public School District (*Prentiss County*)

Jason McKay, Superintendent
 mckayj@baldwynschools.com
 107 W. Main St., Baldwyn 38824
 (662) 365-1000/f(662) 365-1003
 www.baldwynschools.com

Bay St. Louis-Waveland School District (*Hancock County*)

Dr. Sandra Reed, Superintendent
 sreed@bwsd.org
 200 N. 2nd St., Bay St. Louis 39520
 (228) 467-6621/f(228) 467-1230
 www.bwsd.org

Benton County School District

Mr. Pete Howell, Superintendent
 phowell@benton.k12.ms.us
 P.O. Box 247, 31 Main St.
 Ashland 38603
 (662) 224-6252/f(662) 224-3607
 www.benton.k12.ms.us

Biloxi Public School District (*Harrison County*)

Marcus Boudreaux, Superintendent
 marcus.boudreaux@biloxischools.net
 P.O. Box 168, Biloxi 39533
 (228) 374-1810/f(228) 436-5171
 www.biloxischools.net

Booneville School District (*Prentiss County*)

Dr. Todd English, Superintendent
 tenglish@boonevilleschools.org
 201 N. 1st St., Booneville 38829
 (662) 728-2171/f(662) 728-4940
 www.boonevilleschools.org

Brookhaven School District (*Lincoln County*)

Rod Henderson, Superintendent
 rod.henderson@brookhavenschools.org
 P.O. Box 540, Brookhaven 39602
 (601) 833-6661/f(601) 833-4154
 www.brookhavenschools.org

EDUCATION

Calhoun County School District

Dr. Lisa Langford, Superintendent
llangford@calhounk12.com
119 W. Main St., Pittsboro 38951
(662) 412-3152/f(662) 412-3157
www.calhoun.k12.ms.us

Canton Public School District (Madison County)

Gary Hannah, Superintendent
garyhannah@cantonschools.net
403 E. Lincoln St., Canton 39046
(601) 859-4110/f(601) 859-4023
www.cantonschools.net

Carroll County School District

James Ray, Superintendent
jray@ccsd.ms
P.O. Box 256, Carrollton 38917
(662) 237-9276/f(662) 237-9703
www.ccsd.ms

Chickasaw County School District

Mr. John Ellison, Superintendent
jellison@chickasaw.k12.ms.us
P.O. Drawer 480, Houlika 38850
(662) 568-3333/f(662) 568-2993
www.chickasaw.k12.ms.us

Choctaw County School District

Stewart G. Beard, Jr., Superintendent
glenbeard@choctaw.k12.ms.us
P.O. Drawer 398, Ackerman 39735
(662) 285-4022/f(662) 285-3815
www.choctaw.k12.ms.us

Claiborne County School District

Dr. Nonya Thrasher, Superintendent
nthrasher@claiborne.k12.ms.us
404 Market St., Port Gibson 39150
(601) 437-4232/f(601) 437-4409
www.claiborne.k12.ms.us

Clarksdale Municipal School District (Coahoma County)

Dr. Joe Nelson, Superintendent
jnelson@cmsd.k12.ms.us
P.O. Box 1088, Clarksdale 38614
(662) 627-8500/f(662) 627-8542
www.cmsd.k12.ms.us

Cleveland School District (Bolivar County)

Dr. Otha Belcher, Jr., Superintendent
obelcher@clevelandmssd.org
305 Merritt Dr., Cleveland 38732
(662) 843-3529/f(662) 843-9731
www.cleveland.k12.ms.us

Clinton Public School District (Hinds County)

Dr. Tim Martin, Superintendent
tmartin@clintonpublicschools.com
P.O. Box 300, Clinton 39060
(601) 924-7533/f(601) 924-6345
www.clintonpublicschools.com

Coahoma County School District

Dr. Ilean Richards, Interim Superintendent
irichards@coahoma.k12.ms.us
P.O. Box 820, Clarksdale 38614
(662) 624-5448/f(662) 624-5512
www.coahoma.k12.ms.us

Coahoma Early College High School

Dr. Valmadge T. Towner, Superintendent
vtowner@cahs.k12.ms.us
Coahoma Community College
3240 Friars Point Rd., Clarksdale 38614
(662) 621-4101/f(662) 624-4315
www.cechs.k12.ms.us

Coffeeville School District (Yalobusha County)

Dr. Vivian McLean-Robinson, Superintendent
vrobinson@coffeevilleschools.org
96 Mississippi St., Coffeeville 38922
(662) 675-8941/f(662) 675-5004
www.coffeevilleschools.org

Columbia School District (Marion County)

Jason Harris, Superintendent
 jharris@columbiaschools.org
 613 Bryan Ave., Columbia 39429
 (601) 736-2366/f(601) 736-2653
www.columbiaschools.org

Columbus Municipal School District (Lowndes County)

Cherie Labat, Superintendent
 labatc@columbuscityschools.org
 2630 McArthur Dr., P.O. Box 1308
 Columbus 39703-1308
 (662) 241-7405/f(662) 241-7457
www.columbuscityschools.org

Copiah County School District

Rickey Clopton, Superintendent
 rickey.clopton@copiah.ms
 254 W. Gallatin St., Hazlehurst 39083
 (601) 894-1341/f(601) 894-2634
www.copiah.ms

Corinth School District (Alcorn County)

Dr. Edward Lee Childress, Superintendent
 lchildress@corinth.k12.ms.us
 1204 N. Harper Rd.
 Corinth 38834-2048
 (662) 287-2425/f(662) 286-1885
www.corinth.k12.ms.us

Covington County School District

Babette Duty, Superintendent
 bduty@covingtoncountyschools.org
 P.O. Box 1269, Collins 39428
 (601) 765-8247/f(601) 765-4102
www.cov.k12.ms.us

DeSoto County School District

Cory Uselton, Superintendent
 cory.uselton@dcsms.org
 5 E. South St.
 Hernando 38632-2216
 (662) 429-5271/f(662) 429-4198
www.desotocountyschools.org

East Jasper School District (Jasper County)

Nadene Arrington, Superintendent
 narrington@eastjasper.k12.ms.us
 P.O. Drawer E, Heidelberg 39439
 (601) 787-3281/f(601) 787-3410
www.eastjasper.k12.ms.us

East Tallahatchie Consolidated School District (Tallahatchie County)

Darron Edwards, Superintendent
 dedwards@etsdk12.org
 411 E. Chestnut St., Charleston 38921
 (662) 647-5524/f(662) 647-3720
www.etsd.k12.ms.us

Enterprise School District (Clarke County)

Josh Perkins, Superintendent
 jperkins@esd.k12.ms.us
 503 River Rd., Enterprise 39330
 (601) 659-7965/f(601) 659-3254
www.esd.k12.ms.us

Forest Municipal School District (Scott County)

Dr. Karen Norwood, Superintendent
 knorwood@forest.k12.ms.us
 325 Cleveland St., Forest 39074
 (601) 469-3250/f(601) 469-3101
www.forest.k12.ms.us

Forrest County School District

Brian Freeman, Superintendent
 brfreeman@forrest.k12.ms.us
 400 Forrest St., Hattiesburg 39401
 (601) 545-6055/f(601) 545-6054
www.fcsd.us

Franklin County School District

Chris Kent, Superintendent
 ckent@fcsd.k12.ms.us
 Franklin County Schools
 P.O. Box 605, Meadville 39653
 (601) 384-2340/f(601) 384-2393
www.franklincountyschools.ms.com

EDUCATION

George County School District

Wade Whitney, Superintendent
wade.whitney@gcsd.us
5152 Main St., Lucedale 39452
(601) 947-6993/f(601) 947-8805
www.gcsd.us

Greene County School District

Charles L. Breland, Superintendent
cbreland@greene.k12.ms.us
P.O. Box 1329, Leakesville 39451
(601) 394-2364/f(601) 394-5542
www.gcsd.ms

Greenville Public Schools

(Washington County)

Dr. Debra Dace, Superintendent
ddace@gville.k12.ms.us
412 S. Main St., Greenville 38701
(662) 334-7000/f(662) 334-7021
www.gvillepublicschooldistrict.com

Greenwood Leflore Consolidated School District

Dr. Mary Brown, Superintendent
mbrown@glcsd.org
P.O. Box 1497
1901 Hwy. 82 W., Greenwood 38930
(662) 644-0682/f(662) 455-7409
www.glcsd.org

Grenada School District (Grenada County)

Dr. David Daigneault, Superintendent
ddaigneault@grenadak12.com
P.O. Box 1940, Grenada 38901
(662) 226-1606/f(662) 226-7994
www.gsd.k12.ms.us

Gulfport School District (Harrison County)

Glen East, Superintendent
glen.east@gulfportschools.org
P.O. Box 220, Gulfport 39502-0220
(228) 865-4600/f(228) 865-4618
www.gulfportschools.org

Hancock County School District

Alan Dedeaux, Superintendent
adedeaux@hancockschools.net
17304 Hwy. 603, Kiln 39556
(228) 255-0376/f(228) 255-0378
www.hancockschools.net

Harrison County School District

Roy Gill, Superintendent
rgill@harrison.k12.ms.us
11072 Hwy. 49, Gulfport 39503
(228) 539-6500/f(228) 539-6507
www.harrison.k12.ms.us

Hattiesburg Public School District (Forrest County)

Dr. Robert Williams, Superintendent
superintendent@hattiesburgpsd.com
301 Mamie St.
P.O. Box 1569, Hattiesburg 39403
(601) 582-5078/f(601) 582-6666
www.hattiesburgpsd.com

Hazlehurst City School District (Copiah County)

Cloyd Garth, Superintendent
cgarth@hazlehurst.k12.ms.us
119 Robert McDaniel Dr.
Hazlehurst 39083
(601) 894-1152/f(601) 894-3170
www.hazlehurst.k12.ms.us

Hinds County School District

Dr. Delesicia Martin, Superintendent
dmartin@hinds.k12.ms.us
13192 Hwy. 18, Raymond 39154
(601) 857-5222/f(601) 857-8548
www.hinds.k12.ms.us

Hollandale School District (Washington County)

Dr. Mario Willis, Superintendent
mwillis2@hollandalesd.org
P.O. Box 128, Hollandale 38748
(662) 827-2276/f(662) 827-5261
www.hollandalesd.org

**Holly Springs School District
(Marshall County)**

Dr. Irene Walton Turnage, Superintendent
iwalton@hssd.k12.ms.us
840 Hwy. 178 E., Holly Springs 38635
(662) 252-2183/f(662) 252-7718
www.hssdk12.org

**Holmes County Consolidated
School District**

Mr. Will Russell, Superintendent
will.russell@holmesccsd.org
P.O. Box 630, Lexington 39095
(662) 834-2175/f(662) 834-9060
www.holmesccsd.org

Houston School District (Chickasaw County)

Mr. John Ellison, Superintendent
jellison@houston.k12.ms.us
P.O. Drawer 351, Houston 38851
(662) 456-3332/f(662) 456-5259
houstonmsschools.com

Itawamba County School District

Trae Wiygul, Superintendent
twiygul@itawambacountyschools.com
605 S. Cummings St., Fulton 38843
(662) 862-2159/f(662) 862-4713
www.itawambacountyschools.com

Jackson County School District

Dr. John Strycker, Superintendent
John.Strycker@jcsd.ms
4700 Colonel Vickrey Rd., Vancleave 39565
(228) 826-1757 ext. 332/f(228) 826-3393
www.jcsd.ms

**Jackson Public School District
(Hinds County)**

Dr. Errick L. Greene, Superintendent
Superintendent@jackson.k12.ms.us
P.O. Box 2338, Jackson 39225-2338
(601) 960-8725/f(601) 960-8713
www.jackson.k12.ms.us

Jefferson County School District

Dr. Adrian Hammitte, Superintendent
ahammitte@jcpsd.net
P.O. Box 157, Fayette 39069
(601) 786-3721/f(601) 786-8441
www.jcpsd.net

Jefferson Davis County School District

Dexter Jordan, Superintendent
djordan@jdcsd.org
P.O. Box 1197, Prentiss 39474
(601) 792-4267/f(601) 792-2251
www.jdcsd.com

Jones County School District

Mr. Tommy Parker, Superintendent
tdparker@jonesk12.org
5204 Hwy. 11 N., Ellisville 39437
(601) 649-5201/f(601) 649-1613
www.jones.k12.ms.us

Kemper County School District

Hilute Hudson, Superintendent
hhudson@kemper.k12.ms.us
P.O. Box 219, DeKalb 39328
(601) 743-2657/f(601) 743-9297
www.kemper.k12.ms.us

Kosciusko School District (Attala County)

Billy Ellzey, Superintendent
billy.ellzey@kosciuskoschools.com
229 W. Washington St., Kosciusko 39090
(662) 289-4771/f(662) 289-1177
www.ksd.k12.ms.us

Lafayette County School District

Dr. Adam Pugh, Superintendent
adam.pugh@gocommodores.org
100 Commodore Dr., Oxford 38655
(662) 234-3271/f(662) 236-3019
www.gocommodores.org

EDUCATION

Lamar County School District

Dr. Steven Hampton, Superintendent
steven.hampton@lamarcountyschools.org
P.O. Box 609, 424 Martin Luther King Dr.
Purvis 39475
(601) 794-1030/f(601) 794-1012
www.lamarcountyschools.org

Lauderdale County School District

Dr. John-Mark Cain, Superintendent
jcain@lauderdale.k12.ms.us
301 46th Ct., P.O. Box 5498
Meridian 39302
(601) 693-1683/f(601) 485-1748
www.lauderdale.k12.ms.us

Laurel School District (Jones County)

Dr. Toy L. Watts, Superintendent
tlwatts@laurelschools.org
P.O. Box 288, 303 W. 8th St., Laurel 39441
(601) 649-6391/f(601) 649-6398
www.laurelschools.org

Lawrence County School District

Dr. Titus M. Hines, Superintendent
titus.hines@lawcosd.org
346 Thomas E. Jolly Dr.
Monticello 39654
(601) 587-2506/f(601) 587-2221
www.lawrence.k12.ms.us

Leake County School District

Yvette Young, Superintendent
yyoung@leakesd.org
P.O. Drawer 478
123 E. Main St., Carthage 39051
(601) 267-4579/f(601) 267-5283
www.leakesd.org

Lee County School District

Coke Magee, Superintendent
coke.magee@leecountyschools.us
P.O. Box 832, Tupelo 38802
(662) 841-9144/f(662) 680-6012
www.leecountyschools.us/portal

Leland School District (Washington County)

Mr. Jesse King, Superintendent
jesseking@lelandk12.org
408 E. Fourth St., Leland 38756
(662) 686-5000/f(662) 686-5029
www.lelandschooldistrict.schoolinsites.com

Lincoln County School District

David Martin, Superintendent
david.martin@lincoln.k12.ms.us
P.O. Box 826, Brookhaven 39602
(601) 835-0011/f(601) 833-3030
www.lcsd.k12.ms.us

Long Beach School District (Harrison County)

Jay Smith, Superintendent
jay.smith@lbsdk12.com
19148 Commission Rd., Long Beach 39560
(228) 864-1146/f(228) 863-3196
www.lbsdk12.com

Louisville Municipal School District (Winston County)

David Luke, Superintendent
dluke@louisville.k12.ms.us
P.O. Box 909, 112S. Columbus Ave.
Louisville 39339
(662) 773-3411 Ext. 8120/f(662) 773-4068
www.louisville.k12.ms.us

Lowndes County School District

Sam Allison, Superintendent
Sam.allison@lowndes.k12.ms.us
1053 Hwy. 45 S., Columbus 39701
(662) 244-5000/f(662) 244-5041
www.lowndes.k12.ms.us

Madison County School District

Charlotte Seals, Superintendent
cseals@madison-schools.com
476 Highland Colony Pkwy.
Ridgeland 39157
(601) 879-3000/f(601) 879-3039
www.madison-schools.com

Marion County School District
 Wendy A. Bracey, Superintendent
 wbracey@marionk12.org
 1010 Hwy. 13 N., Ste. 2
 Columbia 39429
 (601) 736-7193/f(601) 736-6274
 www.marionk12.org

Marshall County School District
 Mr. Roy Lawson, Superintendent
 rlawson@mcschools.us
 122 S. Spring St.
 Holly Springs 38635
 (662) 252-4271/f(662) 252-5129
 www.marshallcountysd.org

**McComb Separate School District
 (Pike County)**
 Dr. Cederick L. Ellis, Sr., Superintendent
 ellisc@mccomb.k12.ms.us
 P.O. Box 868, McComb 39649-0868
 (601) 684-4661/f(601) 249-4732
 www.mccomb.k12.ms.us

Meridian Public Schools (Lauderdale County)
 Dr. Amy Carter, Superintendent
 amcarter@mpsdk12.net
 1019 25th Ave., Meridian 39303
 (601) 484-4915/f(601) 485-4818
 www.mpsd.k12.ms.us

Monroe County School District
 Mr. Brian Jernigan, Superintendent
 brianjernigan@mcsd.us
 1619 Hwy. 25 N.
 P.O. Box 209, Amory 38821
 (662) 257-2176/f(662) 257-2181
 www.mcsd.us

Moss Point School District (Jackson County)
 Dr. Shannon Vincent-Raymond, Superintendent
 svincent@mpsdnow.org
 4924 Church St., Moss Point 39563-2645
 (228) 475-4558/f(228) 474-4978
 www.mpsdnow.org

**Natchez-Adams School District
 (Adams County)**
 Fred T. Butcher, Superintendent
 fbutcher@natchez.k12.ms.us
 P.O. Box 1188, Natchez 39121
 (601) 445-2904/f(601) 445-2818
 www.natchez.k12.ms.us

Neshoba County School District
 Lundy Brantley, Superintendent
 lbrantley@neshobacentral.com
 580 E. Main St., Philadelphia 39350
 (601) 656-3752/f(601) 656-7557
 www.neshobacentral.com

Nettleton School District (Lee County)
 Tim Dickerson, Superintendent
 tdickerson@nettleton.k12.ms.us
 P.O. Drawer 409, Nettleton 38858
 (662) 963-2151/f(662) 963-7407
 www.nettletonschools.com

**New Albany Public School District
 (Union County)**
 Lance Evans, Superintendent
 levans@nasd.ms
 301 Hwy. 15 N., New Albany 38652
 (662) 534-1800/f(662) 534-3608
 www.newalbanyschools.us

Newton County School District
 Mr. J.O. Amis, Superintendent
 jamis@newton.k12.ms.us
 P.O. Box 97
 15305 Hwy. 15, Decatur 39327
 (601) 635-2317/f(601) 635-4025
 www.newton.k12.ms.us

**Newton Municipal School District
 (Newton County)**
 Dr. Glenda Nickson, Superintendent
 gdnickson@nmsd.us
 205 School St., Newton 39345
 (601) 683-2451/f(601) 683-7131
 www.nmsd.us

EDUCATION

North Bolivar Consolidated School District

Maurice Smith, Superintendent
msmith@nbcasd.k12.ms.us
201 Green St., Mound Bayou 38762
(662) 339-3781/f(662) 741-2726
www.nbcasd.k12.ms.us

North Panola School District

(Panola County)

Mr. Cedric L. Richardson, Superintendent
crichardson@northpanolaschools.org
470 Hwy. 51 S., Sardis 38666
(662) 487-2305/f(662) 487-2050
www.northpanolaschools.org

North Pike Consolidated School District

(Pike County)

Dennis E. Penton, Superintendent
dpenton@npsd.k12.ms.us
1036 Jaguar Trail, Summit 39666
(601) 276-2216/f(601) 276-3666
www.npsd.k12.ms.us

North Tippah Consolidated School District

(Tippah County)

Scott Smith, Superintendent
scott.smith@ntippah.k12.ms.us
P.O. Box 65, 24111
Hwy. 15 N., Tiplersville 38674
(662) 223-4088/f(662) 223-5379
www.northtippah.org

Noxubee County School District

Rod Broadnax, Interim Superintendent
rbroadnax@noxcnty.k12.ms.us
P.O. Box 540, Macon 39341-0540
(662) 726-4527/f(662) 726-2809
www.noxcnty.k12.ms.us

Ocean Springs School District

(Jackson County)

Dr. Bonita Coleman Potter, Superintendent
superintendent@ossdms.org
P.O. Box 7002, 2300 Government St.
Ocean Springs 39566-7002
(228) 875-7706/f(228) 875-7708
www.ossdms.org

Okolona Municipal Separate School District (Chickasaw County)

Mr. Chad Spence, Superintendent
cspence@okolona.k12.ms.us
411 W. Main St., Okolona 38860
(662) 447-2353/f(662) 447-9955
www.okolona.k12.ms.us

Oxford School District (Lafayette County)

Mr. Brian Harvey, Superintendent
bharvey@oxfordsd.org
224 Bramlett Blvd., Oxford 38655
(662) 234-3541/f(662) 232-2862
www.oxfordsd.org

Pascagoula-Gautier School District

Mr. Wayne Rodolfich, Superintendent
wrodolfich@pgsd.ms
1006 Community Ave.
Pascagoula 39568-0250
(228) 938-6495/f(228) 938-6528
www.pgsd.ms

Pass Christian Public School District (Harrison County)

Dr. Carla J. Evers, Superintendent
cevers@pc.k12.ms.us
6457 Kiln DeLisle Rd.
Pass Christian 39571
(228) 255-6200/f(228) 255-9302
www.pc.k12.ms.us

Pearl Public School District

(Rankin County)

Dr. Ray Morgigno, Superintendent
rmorgigno@pearlk12.com
P.O. Box 5750, Pearl 39208
(601) 932-7921/f(601) 932-7929
www.pearlk12.com

Pearl River County School District

Mr. Alan Lumpkin, Superintendent
alumpkin@prc.k12.ms.us
7441 Hwy. 11, Carriere 39426
(601) 798-7744/f(601) 798-3527
www.prc.k12.ms.us

Perry County Schools

Dr. Scott Dearman, Superintendent
 sdearman@pcsdms.us
 105 Main St., New Augusta 39462
 (601) 964-3211/f(601) 964-8204
www.pcsdms.com

Petal School District (Forrest County)

Dr. Matt Dillon, Superintendent
 matt.dillon@petalschools.com
 P.O. Box 523, Petal 39465
 (601) 545-3002/f(601) 584-4700
www.petalschools.com

Philadelphia Public School District (Neshoba County)

Ms. Lisa Hull, Superintendent
 lhull@phillytornadoes.com
 248 Byrd Ave., Philadelphia 39350
 (601) 656-2955/f(601) 656-3141
www.phillytornadoes.com

Picayune School District (Pearl River County)

Mr. Dean Shaw, Superintendent
 dshaw@pcu.k12.ms.us
 706 Goodyear Blvd., Picayune 39466
 (601) 798-3230/f(601) 798-1742
www.picayuneschools.org

Pontotoc City Schools (Pontotoc County)

Dr. Michelle Larabee Bivens, Superintendent
 Mbivens@pontotoc.k12.ms.us
 140 Education Dr., Pontotoc 38863
 (662) 489-3336/f(662) 489-7932
www.pontotoc.k12.ms.us

Pontotoc County School District

Dr. Brock Puckett, Superintendent
 brockpuckett@pcsd.ms
 354 Center Ridge Dr., Pontotoc 38863
 (662) 489-3932/f(662) 489-3922
 brockpuckett@pcsd.ms
www.pcsd.ms

Poplarville Special Municipal Separate School District (Pearl River County)

Konya Miller, Superintendent
 kmiller@poplarvilleschools.org
 302 S. Julia St., Poplarville 39470
 (601) 795-8477/f(601) 795-0712
www.poplarvilleschools.org

Prentiss County School District

Mr. Jeff Palmer, Superintendent
 jpalmer@prentiss.k12.ms.us
 P.O. Box 179, 105 N. College St.
 Booneville 38829
 (662) 728-4911/f(662) 728-2000
www.prentisscountyschools.com

Quitman School District (Clarke County)

Dr. Toriano Holloway, Superintendent
 tholloway@qsd.k12.org
 104 E. Franklin Ave., Quitman 39355
 (601) 776-2186/f(601) 776-1051
www.quitmanschools.org

Quitman County School District

Dr. Evelyn W. Jossell, Superintendent
 evelynjossell@qcsd.k12.ms.us
 P.O. Drawer E, 310 Pecan St., Marks 38646
 (662) 326-5451/f(662) 326-3694
www.qcschools.com

Rankin County School District

Dr. Sue Townsend, Superintendent
 stownsend@rcsd.ms
 P.O. Box 1359
 1220 Apple Park Pl., Brandon 39043
 (601) 825-5590/f(601) 825-2618
www.rcsd.ms

Richton School District (Perry County)

Clay Anglin, Superintendent
 canglin@richton.k12.ms.us
 P.O. Box 568, 701 Elm Ave.
 Richton 39476
 (601) 788-6581/f(601) 788-9391
www.richtonschools.com

EDUCATION

Scott County School District

Dr. Tony McGee, Superintendent
tmcgee@scott.k12.ms.us
110 Commerce Loop, Forest 39074
(601) 469-3861/f(601) 469-3874
www.scott.k12.ms.us

Senatobia Municipal School District (Tate County)

Chris Fleming, Superintendent
cfleming@senatobia.k12.ms.us
104 McKie St., Senatobia 38668
(662) 562-4897/f(662) 562-4996
www.senatobiaschools.com

Simpson County School District

Greg Paes, Superintendent
gregpaes@simpson.k12.ms.us
111 Education Ln., Mendenhall 39114
(601) 847-8000/f(601) 847-8001
www.simpson.k12.ms.us

Smith County School District

Nick Hillman, Superintendent
nick.hillman@smithcountyschools.net
212 Sylvarena Ave.
P.O. Box 308, Raleigh 39153
(601) 782-4296/f(601) 782-9895
www.smithcountyschools.net

South Delta School District (Sharkey County)

Mr. James Johnson Waldington, Superintendent
jwaldington@southdelta.k12.ms.us
P.O. Box 219, Rolling Fork 39159
(662) 873-4302/f(662) 873-6878
www.southdelta.k12.ms.us

South Panola School District (Panola County)

Mr. Tim Wilder, Superintendent
twilder@spanola.net
209 Boothe St., Batesville 38606
(662) 563-9361/f(662) 563-6077
www.spsd.k12.ms.us

South Pike School District

Dr. Donna Scott, Superintendent
dscott@southpike.org
250 W. Bay St., Magnolia 39652
(601) 783-0430/f(601) 783-6733
www.southpike.org

South Tippah School District (Tippah)

Tony Elliott, Superintendent
telliott@stds.ms
402 Greenlee Ave., Ripley 38663
(662) 837-7156/f(662) 837-1362
www.stippah.k12.ms.us

Starkville Oktibbeha Consolidated School District (Oktibbeha County)

Dr. Eddie Peasant, Superintendent
epeasant@starkvillesd.com
Greensboro Center
401 Greensboro St., Starkville 39759
(662) 324-4050/f(662) 324-4068
www.starkvillesd.com

Stone County School District

Inita Owen, Superintendent
iowen@stoneschools.org
214 Critz St., Wiggins 39577
(601) 928-7247/f(601) 928-5122
www.stoneschools.org

Sunflower County Consolidated School District

Miskia Davis, Interim Superintendent
mdavis@sunflower.k12.ms.us
Hwy. 49 N., 196 MLK Dr., Indianola 38751
(662) 887-4919/f(662) 887-7051
www.sunflower.k12.ms.us

Tate County School District

Alee Dixon, Superintendent
adixon@tcsdms.org
574 Parkway St., Coldwater 38618
(662) 562-5861/f(662) 622-7402
www.tatecountyschools.org

Tishomingo County Special Municipal Separate School District

Mrs. Christie Holly, Superintendent
 cholly@tcsk12.com
 1620 Paul Edmondson Dr., Iuka 38852
 (662) 423-3206/f(662) 424-9820
www.tcsk12.com

Tunica County School District

Dr. Margie Pulley, Interim Superintendent
 (Conservator)
 pulleym@tunicak12.org
 P.O. Box 758, 744 School St.
 Tunica 38676
 (662) 363-2811/f(662) 363-3061
www.tunicak12.org

Tupelo Public School District (Lee County)

Dr. Robert Joseph Picou, Superintendent
 rjpicou@tupeloschools.com
 P.O. Box 557, Tupelo 38802-0557
 (662) 841-8850/f(662) 841-8887
www.tupeloschools.com

Union County School District

Mr. Russell Taylor, Superintendent
 rtaylor@union.k12.ms.us
 P.O. Box 939, 250 Carter Ave.
 New Albany 38652
 (662) 534-1960/f(662) 534-1961
www.union.k12.ms.us

Union Public School District (Newton County)

Tyler Hansford, Superintendent
 hansfordt@unionyellowjackets.org
 P.O. Box 445, Union 39365
 (601) 774-9579/f(601) 774-0600
www.unionyellowjackets.org

Vicksburg-Warren School District (Warren County)

Mr. Chad Shealy, Superintendent
 cshealy@vwdsd.org
 1500 Mission 66, Vicksburg 39182
 (601) 638-5122/f(601) 631-2819
www.vwdsd.k12.ms.us

Walthall County School District

Wade Carney, Superintendent
 wcarney@wcsd.k12.ms.us
 814 Morse Ave., Tylertown 39667
 (601) 876-3401/f(601) 876-6982
www.wcsd.k12.ms.us

Water Valley School District (Yalobusha County)

Jerry Williams, Superintendent
 jwilliams@wvdsd.k12.ms.us
 544 Market St., P.O. Box 788
 Water Valley 38965
 (662) 473-1203/f(662) 473-1225
www.wvdsdonline.com

Wayne County School District

Tommy Branch, Superintendent
 brancht@wcsdms.com
 810 Chickasawhay St.
 Waynesboro 39367
 (601) 735-4871/f(601) 735-4872
www.wayne.k12.ms.us

Webster County School District

Brian Jones, Superintendent
 bjones@webstercountyschools.org
 95 Clark Ave., Eupora 39744
 (662) 258-5921/f(662) 258-3134
www.webstercountyschools.org

West Bolivar Consolidated School District

John I. Taylor, Superintendent
 jtaylor@wbcsdk12.org
 Hwy. 1 & 8, P.O. Box 189, Rosedale 38769
 (662) 759-3525/f(662) 759-6795
www.wbcsdk12.org

West Jasper Consolidated School District (Jasper County)

Mr. Warren Woodrow, Superintendent
 wwoodrow@westjasper.k12.ms.us
 P.O. Box 610, Bay Springs 39422
 (601) 764-2280/f(601) 764-4490
www.wjsd-mississippi.schoolloop.com

EDUCATION

West Point School District (Clay County)

Mr. Burnell McDonald, Superintendent
bmcDonald@WestPoint.k12.ms.us
P.O. Box 656, West Point 39773
(662) 494-4242/f(662) 494-8605
www.westpoint.k12.ms.us

West Tallahatchie Consolidated School District (Tallahatchie County)

Dr. Sherry T. Ellington, Superintendent
sherryellington@wtsd.k12.ms.us
P.O. Box 129, Webb 38966
(662) 375-9291/f(662) 375-9294
www.wtsdschools.org

Western Line School District (Washington County)

Lawrence Hudson, Superintendent
lhudson@westernline.org
P.O. Box 50, 102 Maddox Rd., Avon 38723
(662) 335-7186/f(662) 378-2285
www.westernline.org

Wilkinson County School District

Chavis L. Bradford, Interim Superintendent
cbradford@wilkinson.k12.ms.us
P.O. Box 785, Woodville 39669
(601) 888-6085/f(601) 888-3133
www.wilkinson.k12.ms.us

Winona-Montgomery Consolidated School District

Dr. Teresa Jackson, Superintendent
teresajackson@winonaschools.net
218 Fairground St., Winona 38967
(662) 283-3731/f(662) 283-1003
www.winonamontgomerycsd.com

Yazoo County School District

Dr. Ken Barron, Superintendent
ken.barron@yazoo.k12.ms.us
P.O. Box 1088, 94 Panther Dr.
Yazoo City 39194
(662) 746-4672/f(662) 746-9270
www.yazoo.k12.ms.us

MISSISSIPPI SPECIAL STATE SCHOOLS

Mississippi Achievement School District

Dr. Jermall Wright, Superintendent
P.O. Box 127, 1133 Calhoun Ave.
Yazoo City 39194
(662) 746-2125/f(662) 746-9210
www.masd.k12.ms.us

Forrest County Agricultural High School

Dr. Donna Boone, Superintendent
dboone@forrestcountyahs.com
215 Old Hwy. 49 E., Brooklyn 39425
(601) 582-4102/f(601) 545-9483
www.forrestcountyahs.com

Mississippi School of the Arts

Dr. Suzanne Hirsch, Executive Director
shirsch@mdek12.org
P.O. Box 229
Brookhaven 39602-0229
(601) 823-1300/f(601) 823-1555
Toll Free: 1-866-672-7871
www.msa.k12.ms.us

Mississippi School for the Deaf

Dr. Jeremy Stinson, Superintendent
jeremy.stinson@mdsbk12.org
1253 Eastover Dr., Jackson 39211
(601) 984-8000/f(601) 984-8066
www.msdk12.ms.us

Mississippi School for the Blind

Dr. Jeremy Stinson, Superintendent
jeremy.stinson@mdsbk12.org
1252 Eastover Dr., Jackson 39211
(601) 984-8200/f(601) 984-8230
www.msbk12.ms.us

Mississippi School for Mathematics and Science

Dr. Germain McConnell, Executive Director
gmccConnell@themsms.org
1100 College St., MUW 1627
Columbus 39701
(662) 329-7674/f(662) 329-7205
www.themsms.org

MISSISSIPPI COMMUNITY COLLEGES

3825 Ridgewood Rd., Jackson 39211

(601) 432-6518/f(601) 432-6480

www.mccb.edu

info@sbcjc.cc.ms.us

Mississippi has 15 community colleges that provide students the opportunity to earn a quality education at an affordable cost. These community colleges administer academic programs for students that plan on transferring to a university, career and technical education programs for those looking to quickly enter the workforce, non-credit workforce training for employers and employees, and high school equivalency for students that did not graduate high school. In an average year, Mississippi's community colleges educate and train approximately 98,000 students.

The Mississippi Community College Board (MCCB) is a coordinating state agency that creates standards and guidelines for the 15 community college districts. The MCCB works alongside community college presidents and representatives to promote the system. The Board exercises its jurisdiction as outlined in Sections 37-4-1 and 37-4-3, Mississippi Code 1982, Revised 1990.

The State's community and junior college system began in 1924 when the legislature allowed agricultural high schools to include freshmen and sophomore college courses. Four years later, the schools were instructed to create junior colleges. Because of this, what is now known as the Mississippi Community College Board was established in 1928 as the Commission on Junior Colleges.

By 1931, 11 junior colleges had been established; by 1950, the total had grown to 15. In 1987, the schools were allowed to change their names to community college as a more appropriate description of their relationships with their corresponding districts.

In 1986, the Commission on Junior Colleges was replaced by the State Board for Community and Junior Colleges. The board was enacted as an independent agency. The name was changed to Mississippi Community College Board during the 2011 legislative session. The board consists of 10 governor appointed members. Two members are appointed from each of the five Congressional districts as they existed before the 2000 census.

The mission of the Mississippi Community College Board is "to advance the community college system through coordination, support, leadership, and advocacy." The board's core values are professionalism, integrity, partnerships, innovation, and diversity.



KELL SMITH

*Interim Executive Director
Mississippi Community College Board*

On July 16, 2021, Mr. Kell Smith was named Interim Executive Director of the Mississippi Community College Board (MCCB). Since 2008, he has also served as Director of Communications and Legislative Services for MCCB. In his roles at MCCB, he is responsible for the day-to-day operations of the agency while also handling legislative issues that pertain to the community college system, as well as handling requests from the media. His service as a leader for the State of Mississippi began in 2005 when

he began working at the Secretary of State's office. He believes in working collaboratively with each of the 15 community colleges in order to advance the system and improve the lives of Mississippians.

Kell attended Mississippi State University where he earned a Bachelor of Arts in Political Science in 2003 and also earned a Masters of Public Policy and Administration in 2005. While at MSU, he was co-director of Governmental Affairs for the Student Association and served on the Student Association Housing Committee. He served as a member of the Stennis-Montgomery Association and was a Mississippi State Alumni Delegate. Kell was honored to be selected as a member of the Pi Alpha Alpha Honorary Society as well as a Dean's Scholar.

Kell serves on the Board of Directors for the College Public Relations Association of Mississippi, is a former member of the Board of Director for the Mississippi Council on Economic Education and is a graduate of the Mississippi Community College Leadership Academy.

He is married to the former Mary Straton Karatassos of Starkville. They live in Madison and are the parents of Eleanor and Rosie. He serves as a deacon of Broadmoor Baptist Church.

MISSISSIPPI COMMUNITY COLLEGE BOARD OF TRUSTEES

Consists of 10 trustees appointed by the governor to six-year terms.

Videt Carmichael	Dolly Marascalco	John Pigott	Dr. Dianne Watson
Donnie Caughman	Johnny McRight	Will Symmes	
Bubba Hudspeth	Luke Montgomery	Cheryl Thurmond	

COAHOMA COMMUNITY COLLEGE

3240 Friars Point Rd., Clarksdale 38614
(662) 627-2571/f(662) 621-4297

Website: www.coahomacc.edu

Email: admissions@coahomacc.edu

President: Dr. Valmadge Towner

Degrees Conferred:

Career and Technical Education
Associate Degree and Certificate Options

Managerial Staff:

Jerone Shaw, Rolonda Brown,
Larry Webster, Beverly Overton,
Steven Jossell, Deborah Valentine,
Margaret Dixon, Director of Research,
Karen Woods-Done, Marriel C. Hardy,
Michael Houston, Robert Stalder

Board of Trustees:

Rev. Dennis Hawkins, Cynthia Mitchell
Devona Jones Chambers, Rev. Alvis Pryor, Jr.,
David Williams, Stephen Brandon,
Bennie Brown, DeVoyce C. Morris,
Dr. Mary F. Dear-Moton

COPIAH-LINCOLN COMMUNITY COLLEGE

1028 J. C. Redd Dr., Wesson 9191
(601) 643-5101/f(601) 643-8213

Website: www.colin.edu

President: Dr. Jane Hulon Sims

E-mail: information@colin.edu

Branch Locations:

Natchez Campus:

11 Co-Lin Cir., Natchez 39120
(601) 442-9111

Simpson County Center:

151 Co-Lin Dr., Mendenhall 39114
(601) 849-5149

Degrees Conferred:

Associate of Arts
Associate of Applied Science

Managerial Staff:

Dr. Jane Hulon Sims, Dr. Sandra Barnes,
Dr. Dewayne Middleton, Jackie Martin,
Richard Baker, Dr. Chris Warren,
Dr. Brenda Brown Orr, Dr. Stephanie Duguid,
Brent Duguid, Natalie Davis, Angela Furr

Board of Trustees:

Steven Ammann, Steve Amos, Eugene Bates,
Ray Brown, Fred Butcher, Jack Case,
Mary Cleveland, Rickey Clopton, Chris Dunn,
Lynwood Easterling, Chuck Gilbert,
Adrian Hammitte, Willie Harrison, Titus Hines,
Joyce Johnson, Tommy Jolly, Chris Kent,
Melton King, Randall Lofton, Greg Paes,
Johnny Pyles, Roland Ross, Tommy Sasser,
John Shows, Troy Stewart, Barry Tyson,
Roy Winkworth

EDUCATION

EAST CENTRAL COMMUNITY COLLEGE

275 W. Broad St., Decatur 39327
(601) 635-2111/f(601) 635-4011

Website: www.eccc.edu

President: Dr. Brent Gregory

E-mail: go2ec@eccc.edu

Branch Locations:

Philadelphia US Motors Center:

1250 Pecan Ave., Philadelphia 39350

Philadelphia-Neshoba County Career-Technical Center:

900 Valley Dr., Philadelphia 39350

Integrated Technologies Training Center:

377 Industrial Dr., Choctaw 39350

Leake County Career-Technical Center:

703 Northwest St., Carthage 39051

Carthage Career Advancement Center

121 W. Main St., Carthage 39051

Forest-Scott County Career-Technical Center

521 Cleveland St., Forest 39074

Forest Career Advancement Center

316 S. Main St., Forest 39074

Louisville Career Advancement Center

1465 S. Church St., Louisville 39339

Winston-Louisville Career-Technical Complex

204 Ivey Ave., Louisville 39339

Degrees Conferred:

Associate of Arts

Associate of Science

Associate of Applied Science

Technical Certificate

Career Certificate

Managerial Staff:

Dr. Brent Gregory, Dr. Teresa Mackey,
David Case, Dr. Randall Lee, Mickey Vance,
Bill Wagon

Board of Trustees:

Dr. Jimmy Hollingsworth, Jerry W. Smith,
Jerry Nanc, J.O. Amis, Bobby Boone,
Henry Booth, Dr. Lundy Brantley,
David Byars, Patsy Clark, Pat Cleveland,

Edsel Cliburn, Prentice Copeland,
Rebecca Farris, Ricky Goldman,
Tommy Harrison, Beverly Hart,
Delane Hudson, John Johnson, W.B. Jones,
William E. Kitchings, Dr. Danny Lanier,
Randal Livingston, David Luke,
Dr. Tony McGee, Joel Nelson, Leo Parker,
Jamie Shepard, Annie Stowers,
Janie Wilbanks, Yvette Young



EAST MISSISSIPPI COMMUNITY COLLEGE

1512 Kemper St., Scooba 39358
(662) 476-5000 or (662) 243-1900
f(662) 476-5058

Website: www.eastms.edu

President: Dr. Scott Alsobrooks

E-mail: admissions@eastms.edu

Branch Locations:

Golden Triangle Campus:

8731 S. Frontage Rd., Mayhew 39753

The Communiversity at EMCC:

7003 S. Frontage Rd., Columbus 39701

Lion Hills Center:

2331 Military Rd., Columbus 39705

Columbus Air Force Base extension:

81 Ward St., Columbus Air Force Base
Columbus 39710

West Point-Clay County Center:

1899 E. TVA Rd., West Point 39773

Macon Extension:

Noxubee County High School, 16478 US-45
Macon 39341

Naval Air Station Meridian extension:

255 Rosenbaum Ave., NAS Meridian
Meridian 39309

Degrees Conferred:

Associate of Arts

Associate of Applied Sciences

Various Workforce and career-
technical certificates

Managerial Staff:

Dr. Paul Miller, Dr. Courtney Taylor,
Marcus Wood, Tammie Holmes,
Dr. James Rush, Dr. Melanie Sanders,
Tony Montgomery, Susan Baird,
Julia Morrison

Board of Trustees:

Spencer Broocks, Kathy Dyess,
W.T. "Bubba" Davis, Evelyn Murray,
Linda Jackson, Hazel Johnson,
Frank Nichols, Robert McDade,
Jimmie Moore, Ed Mosley, Greg Stewart,
Joe Max Higgins

HINDS COMMUNITY COLLEGE

501 E. Main St., Raymond 39154
(601) 857-5261 or 1-800-HINDSCC

Website: www.hindsc.edu

President: Dr. Stephen Vacik

E-mail: info@hindsc.edu

Branch Locations:

Academic/Technical Center:

3925 Sunset Dr., Jackson 39213

Nursing/Allied Health Center:

1750 Chadwick Dr., Jackson 39204

Rankin Campus:

3805 U.S. 80 E., Pearl 39208

Utica Campus:

34175 MS-18 W., Utica 39175

Vicksburg-Warren Campus:

755 MS-27 S., Vicksburg 39180

Clyde Muse Center:

515 Country Place Pkwy., Pearl 39208

Degrees Conferred:

Associate of Arts

Associate of Applied Science

Career and Technical Certificates

Managerial Staff:

Dr. Vic Parker, Mr. Randall Harris,
Dr. Keri Cole, Ms. Sherry Franklin,
Dr. Chad Stocks, Mr. Marvin Moak,
Ms. Andrea Janoush, Ms. Renee Cotton,
Ms. Colleen Hartfield, Ms. Jackie Granberry

Board of Trustees:

Mr. Paul Breazeale, Mr. Dale Sullivan,
Dr. Homer Burns, Dr. John D. Calhoun,
Mr. Rickey Clopton, Mr. Brad Fountain,
Dr. Nonya Thrasher, Dr. Delesicia Martin,
Mr. Donald Oakes, Mr. Donald E. McGowan,
Jr, Mr. Chad Shealy, Dr. Ginger Smith,
Dr. Sue Townsend, Dr. Cardell Williams

EDUCATION

HOLMES COMMUNITY COLLEGE

9216 Hwy. 14, Goodman 39079
(662) 472-2312/f(662) 472-9059

Website: www.holmescc.edu

President: Dr. Jim Haffey

E-mail: jhaffey@holmescc.edu

Branch Locations:

Ridgeland Campus:

412 W. Ridgeland Ave.
Ridgeland 39157

Grenada Center:

1060 Avent Dr., Grenada 38901

Attala Educational Center:

620 W. Jefferson St.
Kosciusko 39090

**Yazoo County Economic
Development and Education Center:**

637 E. 15th St., Yazoo City 39194

Degrees Conferred:

Associate of Arts

Associate of Applied Science

Career and Technical Certificates

Managerial Staff:

Dr. Jenny Jones, Dr. Amy Whittington,
Dr. Lindy McCain, Rosemary Self,
Bethany Miller, Kevin Baker,
Julia Brown, Dr. Mike Blankenship,
Steve Diffey, Matt Surrell,
Dr. Clate Holleman, Tish Stewart,
Earline Russell-Smith, James Thompson,
Dr. Stephanie Diffey, Bronwyn Martin,
Dees Britt

Board of Trustees:

Walter Alford, Dr. Walter Roberts,
Doris H. Belk, Dr. Ken Barron,
Glen Beard, Jr., Margaret M. Davis,
Willie B. Davis, Brian Jones,
Dale McBride, Dr. Ronnie McGehee,
Tim Mood, April Neill, Nolan O'Reilly,
Jim Ray, Charlotte Seals, Maurice Stinson,
Mike Thomas, Jack Treloar, General Vann,
Richard Barrett



ITAWAMBA COMMUNITY COLLEGE

602 W. Hill St., Fulton 38843
(662) 862-8000/f(662) 862-8026

Website: www.iccms.edu

President: Dr. Jay Allen

E-mail: president@iccms.edu

Branch Locations:**Tupelo Campus:**

2176th Eason Blvd., Tupelo 38804

Belden Center:

3200 Adams Farm Rd., Belden 38826

Degrees Conferred:

Associate of Arts
Associate of Applied Science
Career Education Certificate

Managerial Staff:

Dr. Brad Boggs, Tyler Camp,
Dr. Melissa Haab, Dr. Joe Lowder,
Tim Senter, Sandi South,
Dr. Michelle Sumerel

Board of Trustees:

Amy Anderson, Jeanette Atkins,
Gerald Bell, Dan Lee Bishop,
Steve Coleman, Steve Eaton,
John Ellison, Ted Foster,
Ronnie Gholston, Danny Gladney,
Don Loden, Greg McKissick,
Danny Park, Danny Robbins,
Stacy Russell, William "Skip" Scaggs,
William Shack, Gill Simmons,
Dr. Jerome Smith, Marilyn Sumerford,
Mac Allen Thomas, Mark Tigner,
Bonnie Webb, D. L. "Bud" Wiygul,
Ollie Young

JONES COUNTY JUNIOR COLLEGE

900 S. Court St., Ellisville 39437
(601) 477-4000/f(601) 477-4095

Website: www.jcjc.edu

President: Dr. Jesse R. Smith

E-mail: jesse.smith@jcjc.edu

Degrees Conferred:

Associate of Arts
Associate of Applied Science
Career Education Certificates

Managerial Staff:

Rick Youngblood, Dr. Finée Ruffin,
Dr. Tessa Flowers, Joel Cain

Board of Trustees:

Mrs. Carolyn Smith, Mr. Josh Perkins,
Mr. Cliff Kelly, Mrs. Babette Duty,
Mr. Charles Breland, Mr. Richard Fleming,
Mr. Zach Buckley, Mrs. Vernell Lofton,
Ms. Jeannine Agee, Mr. Charles Ashley,
Mr. Tommy Parker, Ms. Amber Page,
Mr. Dwain Strickland, Dr. Scott Dearman,
Dr. Jalyynn Roberts, Mr. David Garner,
Mr. Nick Hillman, Mr. Mike Evans,
Mr. Tommy Branch, Mr. Robert Sullivan



EDUCATION

MERIDIAN COMMUNITY COLLEGE

910 Hwy. 19 N., Meridian 39307
(601) 483-8241/f(601) 484-8635

Website: www.meridiancc.edu

President: Dr. Thomas M. Huebner, Jr.

E-mail: helpdesk@meridiancc.edu

Degrees Conferred:

Associate of Arts
Associate of Applied Science
Certificates

Managerial Staff:

Dr. Thomas M. Huebner, Jr.,
Lauren Clay, Pam Harrison,
Leia Hill, Joseph Knight,
Michael Thompson, Annette Cook

Board of Trustees:

Alex Weddington, Tommy Dulaney,
Jamie Cater, C.D. Smith,
LaBaron Hedgemon

**MISSISSIPPI DELTA
COMMUNITY COLLEGE**

P.O. Box 668/Hwy. 3 and Cherry St.
Moorhead 38761
(662) 246-6322

Website: www.msdelta.edu

President: Dr. Tyrone Jackson

E-mail: tjackson@msdelta.edu

Branch Locations:

Greenville Higher Education Center:
2900 A Hwy. 1 S., Greenville 38701

Greenwood Center:
207 W. Park Ave., Greenwood 38930

Capps Technology Center:
920 Hwy. 82, Indianola 38751

Degrees Conferred:

Associate of Arts
Associate of Applied Science
Career and Technical Certificates

Managerial Staff:

Dr. Ben Cloyd, Todd Donald,
Dr. Steven J. Jones, Marsha Lee,
Dan Rives, Teresa Webster

Board of Trustees:

Dr. Peter Jackson, Frank Dantone,
Katherine Tankson, Domino Bellipanni,
Dr. Mary Brown, Fletcher Clark,
Miskia Davis, Charles Edwards, Sr.,
Maurine Gray, Robert "Shorty" Jones,
B. J. Nichols, Desiree Norwood,
James Payne, Krystaline Sample,
Martha Sibley, Juliet Thomas,
Mickey Thompson, Dr. Jemall Wright



MISSISSIPPI GULF COAST COMMUNITY COLLEGE

P.O. Box 609, 51 Main St.
Perkinston 39573
(228) 896-2536

questions@mgccc.edu

Website: www.mgccc.edu

President: Dr. Mary Graham

E-mail: mary.graham1@mgccc.edu

Branch Locations:

Harrison County Campus:

2226 Switzer Rd., Gulfport 39507

Jackson County Campus:

2300 Hwy. 90, Gautier 39553

Jefferson Davis Campus:

2226 Switzer Rd., Gulfport 39507

Perkinston Campus:

51 Main St., Perkinston 39573

Bryant Center at Tradition

19330 Hwy. 67, Biloxi 39532

Community Campus/Advanced

Manufacturing and Technology Center:

10298 Express Dr., Gulfport 39503

Haley Reeves Barbour Maritime

Training Academy

1000 Jerry St. Pé Hwy.

Pascagoula 39568

George County Center:

11203 Old Hwy. 63 S., Lucedale 39452

West Harrison County Center:

21500 B St., Long Beach 39560

Keesler Center:

500 Fisher St., Biloxi 39534

Naval Construction and Battalion Center:

Moreell Bldg., Bldg. 60, Rm. 227

1800 Dong Xoai Ave., Gulfport 39501

Degrees Conferred:

Associate of Arts, Associate of Science,
Associate of Applied Science, Certificate
and Diploma Programs

Managerial Staff:

Dr. Jonathan Woodward, Dr. Jason Pugh,
Dr. Philip Bonfanti, Dr. Suzi Brown,
Dr. Tammy Franks, Dr. Cedric Bradley
Dr. Ladd Taylor

Board of Trustees:

Bill Wilkerson, Jim McIngvale,
Dr. Michael Tatum, Lynn Wade,
Lavell Bond, Sam Albritton, Jr.,
Leonard Bentz, Sr., Wilburn Bolen,
Dr. Rachel Carpenter, Jeffrey Descher,
George Freeland, Jr., Mary Ann Goff,
Randy Haarala, Susan Hunt, Jody Miles,
Doyle Moody, Millie Page, Scott D. Smith,
Bobby Spayde, C.T. Switzer, Jr.,
Robert Watters

NORTHEAST MISSISSIPPI COMMUNITY COLLEGE

101 Cunningham Blvd., Booneville 38829
(662) 728-7751/f(662) 720-7321

Website: www.nemcc.edu

President: Dr. Ricky G. Ford

E-mail: mwdevaughn@nemcc.edu

Branch Locations:

Northeast at Corinth:

2759 S. Harper Rd., Corinth 38834

Northeast at New Albany:

301 North St., New Albany 38652

Northeast at Ripley

1525 City Ave. N., Ripley 38663

Degrees Conferred:

Associate of Arts, Associate of Applied
Science, Certificate Programs

Managerial Staff:

Dr. Criag-Ellis Sasser, Ben Shappley
Will Kollmeyer, Ray Scott

Board of Trustees:

Jack Ramsey, Vance Witt, Kathy Shappley,
John Anderson, Ken Basil, David "Bubba" Pounds,
Christie Holly, Douglas Jackson, Tracie Langston,
Sam McCoy, Larry Mitchell, Luzene Triplett,
Mike Staten, Lonnie Murphy, Katie Moreland

**NORTHWEST MISSISSIPPI
COMMUNITY COLLEGE**

4975 Hwy. 51 N., Senatobia 38668
(662) 562-3200

Website: www.northwestms.edu

President: Michael J. Heindl, Ph.D., JD

E-mail: mheindl@northwestms.edu

Branch Locations:

Main Campus:

4975 Hwy. 51 N., Senatobia 38668

DeSoto Center:

5197 W.E. Ross Pkwy., Southaven 38671

Lafayette-Yalobusha Technical Center:

1310 Belk Dr., Oxford 38655

Olive Branch Training Center

8750 Deerfield Dr., Olive Branch 38654

Degrees Conferred:

Associate of Arts

Associate of Applied Science

Certificate Programs

Managerial Staff:

Dan Smith, Jeff Horton,

Dr. Matthew Domas,

Dr. Tonyalle Rush,

Patti Gordon, Dwayne Casey,

Dr. Carolyn Wiley,

Dr. Keith Reed, Dean,

Dr. Don Jones, Dean,

Dr. Stephanie Mullins, Dean,

Phyllis Johnson, Dean,

Dr. Jeremy Isome, Dean

Board of Trustees:

Dr. Adam Pugh, Cory Uselton, Aleè Dixon,

John T. Lamar, Jr., Jamie Anderson,

Dr. Rachell Anderson, William H. Austin, Jr.,

Jerry Barrett, Judy Bland, Steve Bostick,

Jean Ann Casey, Steve Cummings,

Bill Dawson, Diana Grist, David Hargett,

Sammy Higdon, Jamie Howell,

Dr. Evelyn Jossell, Dr. Lisa Langford,

Chuck Thomas, Steve White,

Dorothy Wilbourn

**PEARL RIVER
COMMUNITY COLLEGE**

101 Hwy. 11 N., Poplarville 39470
(601) 403-1000/f(601) 403-1129

Website: www.prc.edu

President: Dr. Adam Breerwood

E-mail: media@prcc.edu

Branch Locations:

Forrest County Center:

5448 Hwy. 49 S., Hattiesburg 39401

Woodall Technology Center:

906 Sullivan Dr., Hattiesburg 39401

Hancock Center:

454 Hwy. 90, Ste. D, Waveland 39576

Degrees Conferred:

Associate of Arts

Associate in Applied Science

Career and Technical Certificates

Managerial Staff:

Dr. Martha Lou Smith, Roger Knight,

Jeff Long, Dr. Jennifer Seal, Dr. Jana Causey,

Angela Kothmann, Candace Harper,

Ernie Lovell

Board of Trustees:

Wendy Bracey, Alan Dedeaux,

Mitchell Brian Freeman,

Dr. Steve Hampton, Dr. Gale Harris,

Dexter E. Jordan, M.L. "Sonny" Knight,

Frank Ladner, Alan Lumpkin,

Teenia Perry, Dale Purvis, Teresa Stafford,

Anthony Charles "Tony" Waits,

Michael T. Waits, Don Welsh,

Donnie Williamson

**SOUTHWEST MISSISSIPPI
COMMUNITY COLLEGE**

1156 College Dr., Summit 39666
(601) 276-2000/f(601) 276-3888

Website: www.smcc.edu

President: Dr. Steve Bishop

E-mail: admissions@smcc.edu

Degrees Conferred:

Associate of Arts Degree

Associate of Applied Science Degree

Certificates in Vocational

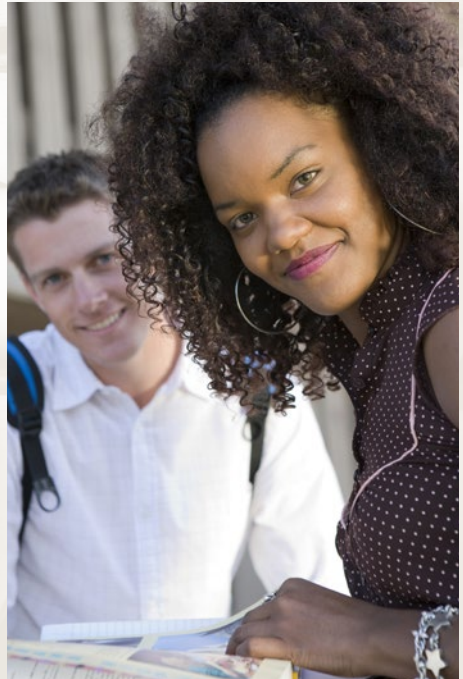
Technical Programs

Managerial Staff:

Dr. Steve Bishop, Andrew Alford,
Matthew Calhoun, Blake Brewer,
Alicia Shows, Bill Tucker

Board of Trustees:

T.W. Bearden, Stephanie Carr,
Bettye Foster Fenn, Chris Hollis,
Debra Jackson, Reggie Jones,
Dr. Henry L. Lewis III, Jimmy Lowery,
Bobby Nelson, Treva Reid, Kellee Smith,
Symeria Thompson, Robert Vick, Jr.,
Lee Wilson





MISSISSIPPI INSTITUTIONS OF HIGHER LEARNING

3825 Ridgewood Rd., Jackson 39211

(601) 432-6198/f(601) 432-6972

www.mississippi.edu

MISSISSIPPI BOARD OF TRUSTEES OF THE STATE INSTITUTIONS OF HIGHER LEARNING

(601) 432-6198

board@ihl.state.ms.us

The Board of Trustees of the State Institutions of Higher Learning (IHL) provides management and control of Mississippi's system of eight public universities. Created in 1943 by a Constitutional amendment (Mississippi Constitution of 1890, Article 9, § 213-A), the board consists of 12 members appointed by the Governor of Mississippi with the advice and consent of the senate. The board members shall be appointed from each of the three Mississippi Supreme Court Districts until there are four members from each district. The terms of office for the board members are nine years.

The position of Commissioner of Higher Education was created by the legislature in 1988 to replace the former Executive Secretary and Director of the board position. The Commissioner is responsible for the day-to-day functions of the board. The Commissioner serves as the Board's chief executive and administers its policies and decisions. In addition, the Commissioner directs a professional staff with expertise in academic programs fiscal matters, communications, technology, research and planning, student financial aid, and physical facilities.

By statute, the IHL Board of Trustees holds two regular slated meetings annually, one in June and the other in January, and as many special meetings as may be necessary on call of the president or on call of five members. A schedule of the board's meetings can be found on the IHL website. The board meets each month except July and December, which are subject to call.

The IHL Board oversees degree-credit courses, research and public service activities, and programs at the eight public universities; the University of Mississippi Medical Center in Jackson; the Mississippi State University Extension Service, Mississippi State University Division of Agricultural, Forestry and Veterinary Medicine; 10 degree granting off-campus instructional programs, and various other locations throughout the state. Available programs range from a variety of undergraduate disciplines to most professional fields. All eight universities offer master's level programs; six have programs at the education specialist level, and seven offer doctoral level programs.



DR. ALFRED RANKINS, JR.

Commissioner of Higher Education
commissioner@ihl.state.ms.us

Dr. Alfred Rankins, Jr. currently serves as Commissioner of Higher Education for the State of Mississippi. As Commissioner, Dr. Rankins advises the Board of Trustees of State Institutions of Higher Learning (IHL) on all higher education issues and provides oversight of the system's eight public universities and academic medical center.

Prior to being named Commissioner of Higher Education, Dr. Rankins served as the 19th president of Alcorn State University. Under his leadership, the university excelled in academics and athletics and was recognized nationally for its commitment to the student experience.

During his tenure as president of his alma mater, Dr. Rankins provided leadership that helped the university enroll its largest freshman class in its history and increased the average ACT scores of entering freshmen for three consecutive years. The university achieved its highest ever ranking by College Consensus as the #7 best HBCU and #1 best public HBCU in the nation. The university established new academic programs, forged new strategic partnerships, and made important discoveries through its research. In intercollegiate athletics, Alcorn won several conference championships and a national championship, while graduating student-athletes in record numbers.

As President, Dr. Rankins improved the campus infrastructure and initiated and completed major capital projects to strengthen Alcorn's infrastructure and improve the campus living and learning environment. Additionally, Dr. Rankins served on the Southern Association of Colleges and Schools Commission on Colleges (SACSCOC) Executive Board as Vice Chairman.

Prior to being named President of Alcorn State University, Dr. Rankins served as IHL's deputy commissioner for academic and student affairs. While serving as deputy commissioner, Dr. Rankins also served a year as acting president of Mississippi Valley State University.

Dr. Rankins began his higher education career on the faculty at Mississippi State University (MSU), where he was a tenured associate professor in the College of Agriculture and Life Sciences (CALs) and statewide extension specialist with the MSU Extension Service.

Currently, Dr. Rankins serves on the State and School Employees Health Insurance Management Board, State Workforce Investment Board, and Entergy Mississippi Advisory Board. He is also a member of the National Association of System Heads (NASH), State Higher Education Executive Officers Association (SHEEO), and Education Commission of the States (ECS).

A native of Greenville, MS, Dr. Rankins received a Bachelor of Science degree from Alcorn State University and both Master of Science and Doctor of Philosophy degrees from Mississippi State University.

Dr. Rankins and his wife, Juandalyn, have two children, Aftyn and Alfred.

MISSISSIPPI BOARD OF TRUSTEES OF STATE INSTITUTIONS OF HIGHER LEARNING

Miss. Code Ann. Sec. 37-101-1 (1972)

Mississippi Constitution of 1890, Article 8 213-A, as amended

Consists of 12 trustees appointed by the Governor.

The Mississippi Board of Trustees of State Institutions of Higher Learning is responsible for the management and control of the eight public universities and units comprising the IHL system. The board also is responsible for demonstrating accountability to the people of Mississippi and effectively communicating the accomplishments, need and value of the system of universities to the public. By strengthening and maintaining a viable comprehensive planning, management and evaluation process, the board and the IHL system facilitate effective decision making, resource allocation and utilization, fiscal accountability, and program review and evaluation.

Dr. J. Walt Starr, *Columbus, President*
Appointed in 2018 by Governor Phil Bryant for a term to expire in 2024.

Bruce Martin, *Meridian*
Appointed in 2018 by Governor Phil Bryant for a term to expire in May 2027.

Tom Duff, *Hattiesburg, Vice President*
Appointed in 2015 by Governor Phil Bryant for a term to expire in May 2024.

Dr. Alfred E. McNair, Jr., *Gautier*
Appointed in 2015 by Governor Phil Bryant for a term to expire in May 2024.

Dr. Ormella Cummings, *Tupelo*
Appointed in 2021 by Governor Tate Reeves for a term to expire in May 2030.

Chip Morgan, *Leland*
Appointed in 2015 by Governor Phil Bryant for a term to expire in May 2024.

Dr. Steven Cunningham, *Hattiesburg*
Appointed in 2008 by Governor Phil Bryant for a term to expire in May 2027.

Gee Ogletree, *Jackson*
Appointed in 2018 by Governor Phil Bryant for a term to expire in May 2027.

Teresa Hubbard, *Oxford*
Appointed in 2021 by Governor Tate Reeves for a term to expire in May 2030.

Hal Parker, *Bolton*
Appointed in 2012 by Governor Phil Bryant for a term to expire in May 2021.

Jeanne Carter Luckey, *Ocean Springs*
Appointed in 2018 by Governor Phil Bryant for a term to expire in May 2027.

Gregory Rader, *Columbus*
Appointed in 2021 by Governor Tate Reeves for a term to expire in May 2030.

ALCORN STATE UNIVERSITY

1000 ASU Dr., Lorman 39096
(601) 877-6111/f(601) 877-2975

Website: www.alcorn.edu

Email: news@alcorn.edu

Founded: 1871

Fall 2019 Enrollment: 3,523

Number of Faculty: 232

Total 2020 Budget: \$72,410,184

Alcorn State University is the oldest public historically Black land-grant institution in the United States and the second-oldest state-supported institution of higher learning in Mississippi. Alcorn University was founded in 1871 for the purpose of educating freedmen and was named in honor of the sitting governor of Mississippi, James L. Alcorn. The site was originally occupied by Oakland College, a school established by Presbyterians in 1828; the State of Mississippi purchased the Oakland campus and named it Alcorn University. Hiram R. Revels resigned his seat as a U.S. senator to become the University's first president. In 1878, Alcorn University became Alcorn Agricultural and Mechanical College. Over time, facilities increased from three historic buildings to more than 80 structures. The original purchase of 225 acres of land grew to a campus of more than 1,700 acres. In 1974, Alcorn Agricultural and Mechanical College became Alcorn State University. Today, with branch locations in Natchez and Vicksburg, Alcorn has earned nationwide recognition not only for being affordable, but also for its excellence in nursing, music, STEM, education, agriculture, and the liberal arts. The University provides an exceptional educational experience that enables students to successfully pursue their educational and professional goals. Celebrating 150 years of academic excellence, Alcorn offers bachelor's, master's, specialist, and doctoral degrees in more than 50 top-degree programs.

**Dr. Felecia M. Nave**

President

arankins@alcorn.edu

Dr. Felecia M. Nave is Alcorn State University's 20th President and first female president in the school's 150-year history.

A 1996 Alcorn graduate, Dr. Nave returns with a bachelor's degree in chemistry, a master's degree in chemical and environmental engineering, a doctorate in engineering, and 18 years of proven success as an innovative educator and leader in complex collegiate environments. Dr. Nave has dedicated her professional career to serving at HBCUs, which has given her a diverse perspective and Broad understanding of HBCU culture and tradition.

In 2003, Dr. Nave began her academic tenure at Prairie View A&M University (PVAMU) as a tenure-track associate professor. During her 15 years at PVAMU, she successfully matriculated through the academic levels to earn the rank of full professor of Chemical Engineering and advanced into administrative leadership roles, notably as Provost and Senior Vice President for Academic Affairs from 2014-2017. In 2018, Dr. Nave was appointed Provost and Vice Chancellor for Academic Affairs at North Carolina Central University, where she served as the university's chief academic officer.

An Alcorn legacy, Dr. Nave is personally and professionally invested in Alcorn's mission to develop well-rounded future leaders of high character who can be successful in the global marketplace. Her expertise in higher education, combined with her commitment to Alcorn, allows her to strengthen current programs while moving the university forward. She plans to develop and support programs that solidify the university's position as a leader amongst elite HBCUs. Dr. Nave and her husband, Mr. Tracie Nave, met at Alcorn as undergraduate students. They are the proud parents of four children: Jaylon, Justin, Kennedy, and Jonathan.

Administrative Cabinet:

Dr. Ontario Wooden
*Provost and Senior Vice President for
 Academic Affairs*
 owooden@alcorn.edu

Dr. Cornelius Wooten
*Senior Vice President for Finance,
 Administrative Services and Operations*
 cwooten@alcorn.edu

Dr. Tracy M. Cook
*Vice President for Student Affairs and
 Enrollment Management*
 tmcook@alcorn.edu

Mr. Larry Orman
*Vice President for Marketing and
 Communication*
 leorman@alcorn.edu

Mr. Marcus Ward
Vice President for Institutional Advancement
 mdward@alcorn.edu

Mr. Derek Horne
Intercollegiate Athletics Director
 djhorne@alcorn.edu

**DELTA STATE UNIVERSITY**

1003 W. Sunflower Rd., Cleveland 38733
 (662) 846-3000

Website: www.deltastate.edu

Email: com-mark@deltastate.edu

Founded: 1924

Fall 2019 Enrollment: 3,761

Number of Faculty: 169

Total 2020 Budget: \$72,329,276

Delta State University was created as Delta State Teachers College by an act of the Mississippi Legislature in 1924. The institution opened for its first regular session

on September 15, 1925, with a faculty and staff of 11 members and an enrollment of 97 students. To match the institution's growth in enrollment and academic offerings, the name was changed to Delta State College in 1955 and to Delta State University in 1974. Graduate work was first offered in 1965 when the Master of Education degree was approved. The University began offering the Educational Specialist degree in 1972 and the Doctor of Education degree in 1981. The University provides a comprehensive undergraduate curriculum, offering 16 baccalaureate degrees in 39 majors. It also provides programs of

EDUCATION

study for 12 master's degrees in 17 majors, the Educational Specialist degree in three majors, and the Doctor of Education and Doctor of Nursing Practice degrees.



Dr. William N. LaForge
President
president@deltastate.edu

Bill LaForge was named president of Delta State in 2013. As a DSU alumnus, he served as national president of the Alumni Association and a trustee of the Delta State University Foundation. He was selected DSU's Alumnus of the Year in 1992 and was a charter member of the DSU Alumni Hall of Fame in 2007.

LaForge's professional career in both the public and private sectors has spanned the fields of law, government, higher education, and public policy. He is

an attorney and registered lobbyist in Washington, D.C., and principal of LaForge Government Relations. He has specialized in federal government relations and represented businesses and other organizations with public policy interests before the U.S. Congress and federal executive branch agencies. He previously served as prosecutor and a deputy chancery court clerk in the Mississippi Delta, as well as a senior congressional policy advisor in Washington.

A native of Cleveland, he graduated with honors from Delta State and earned his law degree from the University of Mississippi School of Law and an LL.M. in international law from Georgetown University. He also studied international law at Cambridge University and received fellowships to study government and public policy in the European Union and at Harvard.

Administrative Staff:

Dr. Charles McAdams
Provost and Vice President for Academic Affairs
cmcadams@deltastate.edu

James Rutledge
Vice President for Finance and Administration
jrutledge@deltastate.edu

Dr. Kurt J. Keppler
Interim Vice President for Student Affairs
kkeppler@deltastate.edu

Dr. Michelle Roberts
*Vice President for Executive Affairs
and Chief of Staff*
mroberts@deltastate.edu

Richard Munroe
*Vice President for University Advancement
and External Affairs*
rmunroe@deltastate.edu

Mike Kinnison
Director of Athletics
mkinnison@deltastate.edu

JACKSON STATE UNIVERSITY

1400 J. R. Lynch St., Jackson 39217
(601) 979-2323/f(601) 979-2948

Website: www.jsums.edu

Email: joyce.m.jordan-gooden@jsums.edu

Founded: 1877

Fall 2019 Enrollment: 7,020

Number of Faculty: 523

Total 2020 Budget: \$138,869,402

Jackson State University's distinguished history began in 1877 as the Natchez Seminary, a private church school set up in Natchez, Mississippi, under the auspices of the American Baptist Home Mission Society of New York. Beginning with only 20 students, the seminary educated newly freed African Americans as ministers and teachers. In 1882, the society moved the school to Jackson, Mississippi, to the location where Millsaps College now stands. The seminary was renamed Jackson College in recognition of its new location in central Mississippi. Three years later, construction began on the site that is now the University's main campus. After the turn of the 20th century, the institution began to broaden its course of study, and in 1924, the college awarded its first degree. By 1934, the American Baptist Home Mission Society had withdrawn its support for the college, which began efforts toward garnering state support for the institution. In 1940, the school reorganized its curriculum as a two-year program and changed its name to the Mississippi Negro Training School. The State Institutions of Higher Learning then expanded the curriculum to a four-year teacher education program. The first graduating class under state support received Bachelor of Science degrees in Education in May 1944; two months after, the school was renamed the Jackson College for Negro Teachers. By 1967, state support had been secured and the school was renamed Jackson State College. Through a legislative act in 1974, the College became Jackson State University (JSU). Five years later, the Institutions of Higher Learning officially designated JSU as Mississippi's Urban University.

**Dr. Thomas Hudson**

President

thomas.k.hudson@jsums.edu

Jackson State University President Thomas K. Hudson grew up in Jackson, Mississippi, where he attended and graduated

from JSU in 1999. He went on to receive his Juris Doctor from the University of Mississippi School of Law. Hudson established a successful private practice and served as an EEO specialist for the Department of Homeland Security/FEMA. Still, his JSU roots beckoned, and he returned to his alma mater in 2012.

Hudson served as Acting President before being named President on November 19, 2020, by the Board of Trustees of State Institutions of Higher Learning. Hudson's goals remain to enhance the university's legacy and expand its global footprint while fortifying its mission to produce ethical and technologically advanced global leaders who properly address societal problems and compete effectively. As a member of the Jackson State staff since 2012, Hudson has served as Chief Operating Officer/Chief Diversity Officer, Chief Diversity and EEO Officer/Title IX Coordinator.

Before the presidency, Hudson served as Assistant to the President and Chief Diversity Officer. He was the co-chair of the university's Strategic Planning Committee. He also served on the executive cabinet and guided senior leadership on all topics related to the university's future course and trajectory.

Always a champion of diversity, inclusion, and education, Hudson served as Vice-Chairperson of the university system's Chief Diversity Officers' Council. He is also a member of the Margaret Walker Alexander Center Board of Directors and the JSU Athletics Hall of Fame Foundation Board of Directors.

Hudson and his wife, Phylandria, have two daughters: Josephine and Abigail.

EDUCATION

Administrative Staff:

Dr. Alisa Mosley
*Provost and Senior Vice President for
Academic Affairs*
alisa.mosley@jsums.edu

Ashley Robinson
Vice President and Director of Athletics
ashley.n.robinson@jsums.edu

Tammiko Harrison
Acting Vice President for Business and Finance
tammiko.l.harrison@jsums.edu

Michael Bolden
Executive Director of Campus Operations
Michael.j.bolden@jsums.edu

Dr. Deborah Dent
Chief Information Officer
Deborah.f.dent@jsums.edu

Dr. Rosella L. Houston
*Acting Director of Institutional Research,
Planning & Assessment*
Rosella.l.houston@jsums.edu

Cheryl Pollard
*Associate Vice President for Enrollment
Management*
cheryl.d.pollard@jsums.edu

Veronica Cohen
Vice President of Institutional Advancement
Veronica.m.cohen@jsums.edu

Dr. Joseph A. Whittaker
*Vice President of Research and Economic
Development*
Joseph.a.whittaker@jsums.edu

Dr. Susan Powell
Vice President of Student Affairs
Susan.e.powell@jsums.edu

Dr. Debra Mays-Jackson
*Vice President for Enrollment Management
and Student Affairs*
Debra.mays-jackson@jsums.edu

Edward O. Watson, J.D.
General Counsel
Edward.o.watson@jsums.edu

Robin Pack
Executive Director of Human Resources
Robin.m.spann-pack@jsums.edu

Ms. Joyce Jordan Gooden
Executive Assistant to the President
Joyce.m.jordan@jsums.edu

MISSISSIPPI STATE UNIVERSITY

P.O. Box 6018, Mississippi State 39762
(662) 325-2323/f(662) 325-3189

Website: www.msstate.edu

Email: admit@msstate.edu

Founded: 1878

Fall 2019 Enrollment: 22,226

Number of Faculty: 1,254

Total 2020 Budget: \$1.03 billion

From comprehensive educational options and groundbreaking research to award-winning service initiatives and an environment that embraces intellectual and creative freedom, the Mississippi State experience is transforming and empowering communities throughout the world. As one of the national land-grant colleges established after Congress passed the Morrill Act in 1862, the institution opened its doors in the fall of 1880 as the Agricultural and Mechanical College of the State of Mississippi. It soon distinguished itself as a leader in agriculture, horticulture, and the mechanical arts in addition to other scientific and classical studies, including military tactics. By 1932, when the legislature renamed the school Mississippi State College, it was well on its way to building the foundation for generations of students from all walks of life to succeed in higher education. In 1958, the legislature changed the name to Mississippi State University. Today, MSU stands as a Top 100 National Science Foundation research institution and Carnegie Foundation R1-Very High Research Activity university, providing access and opportunity to students from all sectors of the state, as well as from 49 states and 84 other countries. Students in eight colleges are participating in cutting-edge research with a global impact, including work to get unmanned aerial systems flying safely in the nation's airspace, designing the car of the future, and generating solutions to world hunger, among other achievements.



Dr. Mark E. Keenum

President

president@msstate.edu

Dr. Mark Everett

Keenum became

Mississippi State

University's 19th

president on Jan. 5,

2009, following a distinguished public service career. He has guided his alma mater to unprecedented heights with an unwavering focus on students – preparing them for success in a rapidly changing world and instilling in them the timeless values of integrity, hard work, and respect. The university has experienced record enrollment growth — reaching a new all-time high in Fall 2020 with 22,986 students. Since July 2010, the university has raised more than \$1 billion in private support, and Infinite Impact: The Campaign for Mississippi State University achieved its historic goal well ahead of schedule in June 2020. This monumental support enabled the university to reach this historic peak of philanthropy and exceed a \$1 billion milestone previously never achieved by an educational institution in the state. The university has completed or initiated capital improvements totaling \$1.1 billion since 2009. These projects have transformed the main campus in Starkville and MSU-Meridian. They include new student residence halls, academic classroom buildings, teaching and research laboratories, a student veterans' center, athletic venues, dining facilities, a United States presidential library, a conference and convention center, and essential infrastructure. A Carnegie Foundation R1-Very High Research Activity Doctoral University, the university's annual research and development expenditures exceeded \$264 million in FY 2019. Keenum serves as chairman of the Board for International Food and Agricultural Development and the Foundation for Food and

EDUCATION

Agriculture Research, as well as chairman of the College Football Playoff Board of Managers. He is also a member of the Mississippi Department of Archives and History Board of Trustees. He began his career at MSU as a faculty member with the Extension Service and the Department

of Agricultural Economics. He went on to serve as chief of staff to U.S. Senator Thad Cochran in Washington, D.C., and was Under Secretary of the U.S. Department of Agriculture prior to returning home to lead Mississippi State.

President's Cabinet:

Dr. David Shaw
Provost and Executive Vice President
david.shaw@msstate.edu

Dr. Keith Coble
*Vice President for Agriculture, Forestry,
and Veterinary Medicine*
keith.coble@msstate.edu

John Cohen
Athletic Director
johncohen@athletics.msstate.edu

Ra'Sheda Forbes
Vice President for Access, Diversity and Inclusion
rforbes@saffairs.msstate.edu

Dr. Regina Hyatt
Vice President for Student Affairs
regina.hyatt@msstate.edu

Dr. Julie Jordan
*Vice President for Research and Economic
Development*
julie.jordan@research.msstate.edu

Joan Lucas
General Counsel
jlucas@legal.msstate.edu

John Rush
Vice President for Development and Alumni
rush@devalumni.msstate.edu

Don Zant
Vice President for Finance and Administration
dzant@finance.msstate.edu

MISSISSIPPI UNIVERSITY FOR WOMEN

1100 College St., Columbus 39701
(877) GO2-THEW

Website: www.muw.edu

Email: admissions@muw.edu

Founded: 1884

Fall 2019 Enrollment: 2,811

Number of Faculty: 161

Total 2020 Budget: \$56,715,886

Established in 1884, Mississippi University for Women, also known as The W, became the first public college for women in America. Originally known as the Industrial Institute and College, the institution was created by an act of the Mississippi Legislature on March 12, 1884, for the dual purposes of providing a liberal arts education and preparing women for employment. The first session began October 22, 1885, with an enrollment of approximately 250 students on a campus formerly occupied by the Columbus Female Institute, a private college founded in 1847. The name of the institution changed to Mississippi State College for Women in 1920 to reflect an emphasis on collegiate rather than vocational education. The name changed again in 1974 to Mississippi University for Women to reflect better the nature of the academic programs, including graduate studies. In 1982, the United States Supreme Court ordered the university to admit a male student to the nursing program. Following this historic decision, the Board of Trustees of State Institutions of Higher Learning ordered the university to change its policies to allow the admission of qualified males into all university programs. In 1988, the Board of Trustees reaffirmed the mission of MUW as an institution of quality academic programs for all qualified students with emphasis on distinctive opportunities for women. Today, The W continues its historic focus on academic leadership development for women, as well as its long tradition of excellence in liberal arts and professional education for both women and men. The W prepares its students for a wide variety of roles both professional and personally.



Nora R. Miller

President

nrmiller@muw.edu

Nora Roberts Miller is the 15th President of Mississippi University for Women (The W). Miller holds a

bachelor's degree in business administration and a bachelor's degree in accounting from Mississippi University for Women. She earned a Master of Business Administration from Mississippi State University in 1998 and is a Certified Public Accountant. She has served on The W staff since 2001.

In her former role as senior vice president for administration and chief financial officer at the university, Miller was responsible for the financial and business management of the university, the operation of the physical plant and related support services and the development and implementation of the campus facilities master plan. She also participated in the formulation of policies, programs and budget development and interacts with students, faculty, staff, the Board of Trustees and agencies to the campus. In addition, she served as the legislative liaison for the campus, advocating for the university with state leaders and legislators.

Miller also served as vice president for finance and administration for the university for 11 years. She has also served as director of budget and financial analysis and director of internal audit for the Mississippi Institutions of Higher Learning; director of accounting for Central Alabama Community College; senior auditing accountant for Potter, Bryant & Tate in Birmingham, Ala., and as supervising senior auditing accountant for the Colleges and Universities Division of the Mississippi State Auditor's Office.

Miller served as chair of the University Press of Mississippi and has served on the Board of Directors of the Southern Association of College and University Business Officers (SACUBO). She serves as Secretary/

EDUCATION

Treasurer of the Southern Universities Conference. She is active in a number of organizations including the Mississippi Chapter of the International Women's Forum, Town and Tower, serving as chair in 2014-2015; Columbus Air Force Base Community Council; and Rotary Club of Columbus, serving as president in 2008-2009, and a three-time Paul Harris Fellow. A member of St. Paul's Episcopal Church, she has served on the Vestry and as Senior Warden in 2015-2016. Miller was also on the Board of Directors of St. Paul's Episcopal School, serving as chair in 2009-2010.

Miller served as Chair of the Tenn-Tom Chapter of the American Red Cross in 2007-2009 and has also been a member of the Northeast Mississippi Chapter and the Mississippi Regional Advisory Council of the American Red Cross.

A Leadership Mississippi graduate, Miller was named one of the Top 50 Businesswomen of the Year by the *Mississippi Business Journal*. Other honors include being named a 2019

Woman of Distinction by the Girl Scouts Heart of the South council, and a Rotary District 6820 2019 Champion of Change. Most recently, Miller received the Mississippi Distinguished Civilian Medal of Honor for her responsiveness to the soldiers and airmen of the Mississippi National Guard. A member of the Mississippi University for Women Alumni Association, she has served as treasurer for the MUW Alumnae Association and the MUW Ecumenical Council.

Under President Miller's leadership, The W has consistently been named a Great College to Work For and ranked by *U.S. News & World Report* and *Washington Monthly*.

Administrative Cabinet:

Dr. Scott Tollison
Provost and Vice President for Academic Affairs

Mark Ellard
Vice President for Administration & CFO

Jessica Harpole
Interim Vice President for Student Affairs and Dean of Students

Karen Clay, J.D.
University Counsel

Carla Lowery
Chief Information Officer

Dr. David Brooking
Director, Student Success Center and Title III Project

Anika Perkins
Executive Director of University Relations

Andrea N. Stevens, CPA
Executive Director of Development & Alumni Relations

Buddy Foster
Interim Director of Athletics & Campus Recreation

MISSISSIPPI VALLEY STATE UNIVERSITY

14000 Hwy. 82 W., Box 7272
Itta Bena 38941
(662) 254-9041/f(662) 254-6709

Website: www.mvsu.edu

Founded: 1950

Fall 2019 Enrollment: 2,147

Number of Faculty: 141

Mississippi Valley State University was created by the Mississippi Legislature as Mississippi Vocational College in 1946. The expressed purpose of the institution was to train teachers for rural and elementary schools and to provide vocational training. The first academic session started in the summer of 1950 with an enrollment of 305 in-service teachers. The first full academic year, 1950-51, began with 14 regular students and seven faculty members. Under its original name and purpose, the institution provided a higher education opportunity for many first-generation college students. In order to reflect the Broadening scope and offerings of the institution, its name was changed to Mississippi Valley State College in 1964. Under this transition, the institution became more general purpose in nature while retaining its commitment to provide special higher education opportunities. The name of the institution was changed to Mississippi Valley State University in 1974. Graduate programs began in 1976.



Dr. Jerryl Briggs, Sr.

President

jerryl.briggs@mvsu.edu

With more than 30 years of professional experience in higher education, Dr. Jerryl Briggs was unanimously selected to become the

eighth President of Mississippi Valley State University (MVSU) on October 19, 2017. Prior to being named President, Dr. Briggs served in the capacities of Acting President and as Executive Vice President/Chief Operating Officer at the University.

During his tenure as President, Dr. Briggs has prioritized campus safety and infrastructure with the completion of a \$500,000 outdoor lighting project and upgrades to the University's video surveillance system. The lighting project entailed light-emitting diode (LED) retrofitting of 516 exterior light fixtures to address safety concerns, lighting quality, and energy consumption. As part of the surveillance system upgrades, a total of 346 cameras were added to the interior and exterior of University buildings.

Dr. Briggs also solidified a partnership with FedEx Logistics, a subsidiary of FedEx Corporation, to launch its Historically Black Colleges and Universities (HBCU) Program, making MVSU the prototype as the program's first HBCU partner. The partnership included the opening of a FedEx Logistics satellite office on MVSU's campus that is staffed with MVSU students. In addition to receiving a competitive wage and valuable work experience, the students are also eligible to receive full benefits and tuition assistance while they are in school, with the potential for full-time employment upon graduation.

Dr. Briggs managed a \$17 million capital improvement project for the University's athletic complex. He also oversaw the renovation of two campus residence halls with additional planning underway for renovations to other campus buildings.

In addition, Dr. Briggs has helped to re-establish the University College model, which led to successfully improving the University's retention rate by 10 percent for fall 2014 and 12 percent for fall 2015. He also worked collectively with MVSU staff to increase overall university enrollment that resulted in a more than 200 percent increase in dual enrollment students for fall 2016 and an overall 11.4 percent increase over three years.

Before joining MVSU, Dr. Briggs served as Vice President for Student Affairs and Enrollment Management at Central State University in Ohio. Prior to Central State University, he has held various positions within higher education administration, including serving for 10 years at Lincoln University (PA) as Vice President for Student Affairs and Enrollment Management, and Dean of Students. He has also held positions at Clark Atlanta University, the College of William and Mary, Georgia Institute of Technology, the University of Illinois-Urbana/Champaign, and North Central College.

He has also presented professional workshops addressing the topic "student success at HBCUs" at various speaking engagements. An avid supporter of HBCUs, Dr. Briggs says, "HBCUs are most dear to my heart. They have been a part of my life, both educationally and professionally. I deeply value our experiences, and we must assure future

generations have these same experiences on our campuses."

Dr. Briggs has received several honors, including the 2015 Citizen of the Year Award from Beta Rho Chapter of Omega Psi Phi Fraternity, Inc., the Outstanding Service Award from Clark Atlanta University, and the Student Affairs Administrator of the Year Award from Lincoln University. He was appointed to the Board of Directors for the United Way of Leflore County. Previously, he served as a board member and national advisor for the Community Foundation for Financial Literacy based in Atlanta, Georgia. Dr. Briggs has also authored a chapter regarding Greek life in Brown, Parks, and Phillips African American Fraternities and Sororities: The Legacy and the Vision (2012).

Dr. Briggs earned his Bachelor of Science degree in chemistry education from Xavier University of Louisiana, his Master of Arts degree in human relations and supervision from Louisiana Tech University, and both an Educational Specialist degree in higher education administration and a doctorate in educational policy, planning and leadership from the College of William and Mary in Williamsburg, VA. He also completed Harvard University's Institute for Educational Management program. Dr. Briggs is from New Orleans, Louisiana, and is the father of two sons – Isaiah and Jerry, Jr.

Administrative Cabinet:

Dr. Kathie Stromile-Golden
Vice President of Academic Affairs
ksgolden@mvsu.edu

Joyce Dixon
Vice President for Business & Finance/CFO
jadixon@mvsu.edu

Dr. Thomas Calhoun
Vice President for Student Affairs, Enrollment Management and Diversity
thomas.calhoun@mvsu.edu

Dianthia Ford-Kee
Athletic Director
dfkee@mvsu.edu

Dr. LaShon F. Brooks
Chief of Staff/Legislative Liaison
lfbrooks@mvsu.edu

Dameon Shaw
Interim Vice President University Advancement
dameon.shaw@mvsu.edu

UNIVERSITY OF MISSISSIPPI

P.O. Box 1848, University 38677
(662) 915-7211

Website: www.olemiss.edu

Email: admissions@olemiss.edu

Founded: 1848

Fall 2019 Enrollment: 22,273

Number of Faculty: 2,238

Total 2021 Budget: \$2.55 billion

The University of Mississippi, affectionately known as Ole Miss, is the state's flagship university. Ole Miss has a long history of producing leaders in public service, academics, business, the arts and research. The university ranks among the nation's best in terms of job placement and retention. The student body includes students from all 50 states and 86 countries.

Included in the elite group of R1: Doctoral Universities – Highest Research activity by the Carnegie Classification, the university is known for its influential and innovative research. Its 16 academic divisions include a major medical school, nationally recognized schools of accountancy and pharmacy, and the Sally McDonnell Barksdale Honors College, which is acclaimed for a blend of academic rigor, experiential learning and opportunities for community action. Programs in the Patterson School of Accountancy have been ranked in the top 10 nationally for nine consecutive years, and the university's online MBA program is recognized among the country's 10 best. UM is among only a handful of institutions that are home to two Language Flagship programs – Arabic and Chinese – that can distinguish students who are interested in careers in national security and international business.

The University of Mississippi Medical Center is home to the Jackson Heart Study, the world's largest long-term study of cardiovascular risk factors in African Americans, and to the world's best-selling physiology textbook, the Textbook of Medical Physiology, which has been translated into 18 languages. The university also has a Center for Intelligence and Security Studies to train the next generation of intelligence analysts, a multidisciplinary Center for Manufacturing

Excellence, and the Croft Institute for International Studies, which prepares graduates to compete and work in a global market.

Recognized among the nation's most beautiful, Ole Miss' main campus is in Oxford, which is routinely acknowledged as one of the country's best college towns.



Dr. Glenn Boyce

Chancellor

chancellor@olemiss.edu

Dr. Glenn Boyce became the 18th Chancellor of the University of Mississippi in October

2019. His career spans more than 37 years across secondary and post-secondary education. Before becoming chancellor, Boyce served as Commissioner of Higher Education for the State of Mississippi for three years. In that position, Boyce led the state's university system, which serves more than 95,000 students at four research universities, four regional universities, and the academic health science center.

While he was Commissioner, the university system set record enrollments, awarded record numbers of degrees, launched the statewide "Complete 2 Compete" program to increase the number of degree holders in Mississippi, prioritized the needs of business and industry and streamlined operations to increase efficiencies.

Previously, Boyce served as the IHL's associate commissioner for academic and student affairs. He joined IHL after serving as president of Holmes Community College for more than nine years.

He earned his bachelor's degree in education and a doctorate in education leadership from the University of Mississippi. Boyce and his wife, Emily, met while Ole Miss undergraduates. The Boyces are also Ole Miss parents as all three of their daughters – Brittany, Danielle and Madeline – hold a degree from the university.

Administrative Cabinet:

Keith Carter
Vice Chancellor for Intercollegiate Athletics
jkcarter@olemiss.edu

Dr. J.R. “Josh” Gladden
Vice Chancellor for Research and Sponsored Programs
jgladden@olemiss.edu

Steven Holley
Vice Chancellor for Administration and Finance
sgholley@olemiss.edu

Dr. Shawnboda Mead
*Interim Vice Chancellor for Diversity and
Community Engagement*
sdmead@olemiss.edu

Charlotte Parks
Vice Chancellor for Development
cpparks@olemiss.edu

Dr. Charlotte Fant Pegues
Interim Vice Chancellor for Student Affairs
cfant@olemiss.edu

Dr. Eduardo Prieto
Vice Chancellor for Enrollment Management
eprieto@olemiss.edu

Kirk Purdom
Executive Director of Alumni Affairs
kirk@olemiss.edu

Perry Sansing
*Interim General Counsel and Special Assistant to
the Chancellor for Government Affairs*
psansing@olemiss.edu

Dr. Noel Wilkin
Provost and Executive Vice Chancellor
nwilkin@olemiss.edu

Dr. LouAnn Woodward
Vice Chancellor for Health Affairs
lawoodward@umc.edu

Jim Zook
Chief Marketing and Communications Officer
jzook@olemiss.edu

**UNIVERSITY OF SOUTHERN
MISSISSIPPI**

118 College Dr., Hattiesburg 39406
(601) 266-1000

Website: www.usm.edu

Founded: 1910

Fall 2019 Enrollment: 14,133

Number of Faculty: 808

Total Budget: \$343.0 Million

The University of Southern Mississippi (USM) is a comprehensive public research institution delivering transformative programs on campuses in Hattiesburg and Long Beach, at teaching and research sites across the Mississippi Gulf Coast, as well as online. Founded in 1910, USM is one of only 131 universities in the nation to earn the Carnegie Classification of Institutions of Higher Education’s “R1: Doctoral Universities – Very high research activity” designation, and its robust

research enterprise includes experts in ocean science and engineering, polymer science and engineering, and large event venue safety and security, among others. USM is also one of only 37 institutions in the nation accredited in theatre, art and design, dance and music. As an economic driver, USM generates an annual economic impact of more than \$600 million across the state. USM welcomes a diverse student body of more than 14,000, representing 71 countries, all 50 states, and every county in Mississippi. USM students have collected four Truman Scholarships and 36 National Science Foundation Graduate Research Fellowships, while also leading Mississippi with 24 Goldwater Scholarships, an honor that recognizes the next generation of great research scientists. Home to the Golden Eagles, USM competes in 17 Division I sports sponsored by the National Collegiate Athletic Association (NCAA). For more information, visit usm.edu.



Dr. Rodney D. Bennett

President
 president@usm.edu

Rodney D. Bennett serves as the chief executive officer and principal educational officer of The University of Southern

Mississippi (USM), a comprehensive public research institution delivering transformative programs on campuses in South Mississippi and along the Mississippi Gulf Coast.

Under President Bennett's leadership, the University has invested in new faculty positions, expanded coastal operations, and worked to increase access to quality

education and research programs to serve the needs of the State of Mississippi and beyond.

President Bennett's vision is for The University of Southern Mississippi to become the model for public higher education across the country. His key institutional priorities include ensuring student success; expanding enrollment strategies; enhancing academic instruction; fostering greater focus on research; bolstering economic and community partnerships; and maximizing human potential.

President Bennett holds a Doctor of Education in Educational Administration from Tennessee State University in Nashville and specialist, master's, and bachelor's degrees from Middle Tennessee State University in Murfreesboro.

Senior Officers:

Steven R. Moser
Provost and Senior Vice President for Academic Affairs
 steven.moser@usm.edu

Dee Dee M. Anderson
Vice President for Student Affairs
 deedeem.anderson@usm.edu

Gordon C. Cannon
Vice President for Research
 gordon.cannon@usm.edu

L. Chad Driskell
Vice President for External Affairs
 chad.driskell@usm.edu

Allyson G. Easterwood
Vice President for Finance and Administration
 allyson.easterwood@usm.edu

Robert D. Gholson
General Counsel
 bob.gholson@usm.edu

Jeremy A. McClain
Director of Athletics
 jeremy.mcclain@usm.edu

FALL 2019 HEADCOUNT ENROLLMENT

<i>Institution</i>	<i>Duplicated*</i>	<i>Unduplicated**</i>
ASU – Main Campus	3,334	
ASU – Natchez	142	
ASU – Vicksburg	47	
Total	3,523	3,523
DSU – Main Campus	2,964	
DSU – Other Locations	865	
Total	3,829	3,761
JSU – Main Campus	6,732	
JSU – Universities Center	153	
JSU – Medical Mall	294	
JSU – E Center	175	
JSU – Downtown Jackson	155	
Total	7,509	7,020
MSU – Main Campus	21,658	
MSU – Meridian	654	
MSU – Other Locations	107	
Total	22,419	22,226
MUW – Main Campus	2,442	
MUW – Tupelo	567	
MUW – Community College	2	
Total	3,011	2,811
MVSU – Main Campus	2,147	
MVSU – Community College	6	
Total	2,153	2,147
UM – Main Campus	19,083	
UM – Tupelo	390	
UM – Booneville	87	
UM – Southaven	466	
UM – Grenada	72	
UM – Medical Center	2,852	
Total	22,950	22,273
USM – Main Campus	13,059	
USM – Gulf Park	3,657	
USM – Stennis Center	59	
Gulf Coast Research Lab	48	
Total	16,823	14,133
IHL System	82,217	77,894

Enrollment figures represent census taken on November 1, 2019.

* Duplicated Enrollment figures include duplicated counts of students who are concurrently enrolled at more than one campus.

** Unduplicated Enrollment figures count students only once for each institution, even if the student is enrolled at more than one campus.

FALL 2019 AVERAGE ACT SCORE OF ENTERING FRESHMEN

ASU	DSU	JSU	MSU	MUW	MVSU	UM	USM	SYSTEM
18.1	21.0	19.1	26.1	21.1	17.9	24.8	22.7	23.7

FALL 2019 FULL-TIME EQUIVALENT ENROLLMENT

These figures are calculated by finding the sum of the total number of undergraduate hours attempted divided by 15 and the total number of graduate hours divided by 12.

Institution	Lower Undergraduate	Upper Undergraduate	Graduate	Total
ASU	1,502.5	1,496.3	271.2	3,270.0
DSU	947.9	1,405.0	341.0	2,693.9
JSU	2,083.1	2,527.8	1,023.6	5,634.5
MSU	7,795.9	10,197.5	2,483.4	20,476.8
MUW	688.3	1,521.3	163.1	2,372.7
MVSU	885.7	673.1	184.1	1,742.9
UM*	7,138.7	9,320.7	4,514.7	20,974.1
USM	4,063.7	6,589.3	1,637.4	12,290.4
SYSTEM	25,105.8	33,731.0	10,618.5	69,455.3

*Includes UMMC.

FALL 2019 ENROLLMENT BY RESIDENCE/ATTENDANCE STATUS

Institution	In-State	Out-of-State	Full-Time	Part-Time
ASU	2,512	1,011	2,890	633
DSU	3,135	626	2,238	1,523
JSU	4,860	2,160	4,736	2,284
MSU	14,250	7,976	18,953	3,273
MUW	2,419	392	2,171	640
MVSU	1,590	557	1,512	635
UM*	12,962	9,311	20,471	1,802
USM	10,589	3,544	10,956	3,177
SYSTEM	52,317	25,577	63,927	13,967

*Includes UMMC. Students enrolled in health professional programs are all considered full-time.

FALL 2019 ENROLLMENT – TOP 5 BACCALAUREATE PROGRAMS

1. Biology/Biological Sciences, General.....	4,494
2. Business Administration and Management, General.....	3,466
3. Kinesiology and Exercise Science.....	2,503
4. Psychology, General.....	2,474
5. Accounting	2,399

FALL 2019 ENROLLMENT – TOP 5 MASTER'S PROGRAMS

1. Business Administration and Management, General	777
2. Nursing	314
3. Social Work.....	309
4. Counselor Education and Guidance Services	300
5. Secondary Education and Teaching	254

RETENTION AND GRADUATION

IPEDS Fall to Fall Retention Rates, Fall 2012 Freshman Cohort

ASU	DSU	JSU	MSU	MUW	MVSU	UM	USM	SYSTEM
74.9%	71.4%	61.2%	79.3%	59.4%	61.3%	85.2%	70.8%	76.7%

Six-Year IPEDS Graduation Rates, Fall 2006 Freshman Cohort

ASU	DSU	JSU	MSU	MUW	MVSU	UM	USM	SYSTEM
29.8%	34.9%	37.5%	59.9%	47.4%	31.2%	59.8%	44.7%	51.3%

2019-20 ANNUAL COST OF EDUCATION

Institution	In-State Tuition	Average Room	Average Board	Total In-State Tuition & Other Costs	Out-of-State Tuition Surcharge	Total Out-of-State Tuition & Other Costs
ASU	\$7,327	\$6,566	\$3,427	\$17,320	\$0	\$17,320
DSU	\$7,671	\$4,531	\$2,601	\$14,803	\$0	\$14,803
JSU	\$8,445	\$5,904	\$3,784	\$18,133	\$1,000	\$19,133
MSU	\$8,910	\$6,440	\$3,701	\$19,051	\$15,040	\$34,091
MUW	\$7,525	\$4,434	\$3,214	\$15,173	\$0	\$15,173
MVSU	\$6,746	\$4,709	\$3,612	\$15,067	\$0	\$15,067
UM*	\$8,828	\$5,806	\$3,748	\$18,382	\$16,272	\$34,654
USM	\$8,896	\$5,538	\$3,813	\$18,247	\$2,000	\$20,247

* Excludes UMMC.

2019-2020 BUILDINGS/FACILITIES

Institution	No. of Buildings	Square Footage
ASU	116	1,967,277
DSU	75	1,671,531
JSU	55	2,704,813
MSU	713	9,182,321
MUW	56	1,534,876
MVSU	122	2,592,851
UM*	258	13,210,824
USM	270	5,653,390
IHL**	7	236,149
SYSTEM	1,672	38,754,032

* Includes UMMC.

** Education & Research Center (Excludes ETV)

2018-19 DEGREES AWARDED BY DEGREE

Institution	Assoc.	Cert.	Bach.	Mast.	Spec.	Prof.	Doct.	Total
ASU	10	0	503	128	1	0	0	642
DSU	0	6	592	246	45	4	12	905
JSU	0	0	1,155	407	48	0	98	1,708
MSU	0	0	3,923	751	28	91	179	4,972
MUW	55	3	756	97	0	3	0	914
MVSU	0	0	287	103	0	0	0	390
UM*	0	10	4,610	900	37	446	196	6,199
USM	0	117	2,448	685	12	0	170	3,432
SYSTEM	65	136	14,274	3,317	171	544	655	19,162

* Includes UMMC.

2018-19 DEGREES AWARDED BY ETHNICITY AND GENDER

Institution	White	Black	Other	Male	Female
ASU	35	580	27	192	450
DSU	548	302	55	311	594
JSU	116	1,539	53	517	1,191
MSU	3,794	799	379	2,418	2,554
MUW	595	284	35	126	788
MVSU	17	353	20	137	253
UM*	4,801	778	620	2,463	3,736
USM	2,397	705	330	1,182	2,250
SYSTEM	12,303	5,340	1,519	7,346	11,816

* Includes UMMC.

2018-19 TOP FIVE BACCALAUREATE DEGREES AWARDED

1. Nursing	916
2. Business Administration and Management, General	842
3. General Studies.....	709
4. Biology/Biological Sciences, General	700
5. Psychology, General	653

2018-19 TOP FIVE MASTER'S DEGREES AWARDED

1. Business Administration and Management, General	387
2. Accounting	198
3. Nursing	196
4. Social Work	148
5. Computer and Information Sciences, General	111

K-12 SCHOOL AND DISTRICT DISTINCTIONS

A-RATED SCHOOL DISTRICTS

2018-19 accountability year (district grades did not change in 2019-20 because of COVID-19)

Alcorn School District
Amory School District
Bay St. Louis-Waveland School District
Biloxi Public Schools
Booneville School District
Clinton Public Schools
DeSoto County Schools
Enterprise School District
Gulfport School District
Hancock County School District
Harrison County School District
Jackson County School District
Lafayette County School District
Lamar County School District
Long Beach School District
Lowndes County School District
Madison County Schools
New Albany Public Schools
Newton County School District
Ocean Springs School District
Oxford School District
Pass Christian Public School District
Pearl Public School District
Petal School District
Pontotoc City Schools
Poplarville School District
Rankin County School District
Stone County School District
Tishomingo County School District
Union County School District
Union Public School District

A-RATED SCHOOLS

Ackerman Elementary
Alcorn Central Elementary School
Anniston Avenue Elementary School
Arlington Heights Elementary School
Armstrong Elementary School
Bailey Middle APAC School
Baker Elementary School
Baldwyn Elementary School
Batesville Elementary School
Batesville Intermediate School
Bay High School
Bayou View Elementary School
Bayou View Middle School
Beach Elementary School
Biloxi High School
Biloxi Junior High
Booneville High School
Bovina Elementary School
Bramlett Elementary School
Brandon Elementary School
Brandon High School
Caledonia Elementary School
Carver Elementary School
Casey Elementary School
Center Hill Elementary School
Center Hill High School
Center Hill Middle
Central Elementary
Central Elementary School
Cherokee Elementary School
Clarkdale Elementary School
Clinton Park Elementary School
College Park Elementary
Collins Elementary
Corinth Elementary School
D T Cox Elementary School
Delisle Elementary School
Della Davidson Elementary
DeSoto Central Elementary School
DeSoto Central Middle School
DeSoto Central Primary
D'Iberville Elementary
D'Iberville Middle School
Dundee Elementary School
Early Childhood Education Center
East Amory School
East Central Lower Elementary
East Central Middle School

East Central Upper Elementary
 East Hancock Elementary School
 East Union Attendance Center
 Eastlawn Elementary School
 Eastside Elementary
 Enterprise Elementary
 Enterprise High School
 Florence Elementary School
 Flowood Elementary School
 Germantown Middle School
 Glade Elementary School
 Gorenflo Elementary School
 Greenbrook Elementary School
 Grenada Elementary School
 Hancock Middle School
 Hancock North Central Elementary
 Hayes Cooper Center
 Hernando Elementary
 Hernando High School
 Hernando Hills Elementary
 Hernando Middle School
 Highland Bluff Elementary
 Hills Chapel School
 Houston Upper Elementary
 Ingomar Attendance Center
 Itawamba Attendance Center
 Iuka Elementary School
 Jeff Davis Elementary School
 Jimmie M. Goodloe Elementary School
 Jumpertown High School
 Key Elementary School
 Kossuth Elementary School
 Kossuth High School
 Lafayette Elementary School
 Lafayette Upper Elementary School
 Lake Cormorant Elementary
 Lake Elementary School
 Laurel Magnet School of the Arts
 Lawhon Elementary School
 Leakesville Elementary School
 Lester Elementary School
 Lewisburg Elementary School
 Lewisburg High School
 Lewisburg Middle
 Lewisburg Primary
 Lizana Elementary School
 Long Beach Middle School
 Longleaf Elementary
 Lovett Elementary School
 Luther Branson School
 Lyman Elementary School
 Madison Avenue Lower Elementary
 Madison Avenue Upper Elementary
 Madison Central High School
 Madison County Preschool
 Madison Middle School
 Madison Station Elementary School
 Magnolia Park Elementary
 Mannsdale Elementary
 Mannsdale Upper Elementary
 Marietta Elementary School
 McLaurin Elementary School
 Middle School of Poplarville
 Mooreville Elementary School
 Myrtle Attendance Center
 Nanih Waiya School
 Neshoba Central Elementary School
 New Albany Elementary School
 New Albany High School
 New Hope Elementary School
 Newton County Elementary School
 Nichols Elementary School
 North Bay Elementary School
 North Bay Elementary School
 North Pontotoc Elementary School
 North Pontotoc Upper Elementary
 North Woolmarket Elementary
 Northshore Elementary
 Northside Elementary
 Northwest Elementary School
 Northwest Middle School
 Northwest Rankin Middle School
 Noxapater High School
 Oak Grove Central Elementary
 Oak Grove High School
 Oak Grove Lower Elementary
 Oak Grove Middle School
 Oak Grove Primary
 Oak Grove Upper Elementary
 Oak Park Elementary School
 Oakdale Elementary
 Obama Magnet School
 Ocean Springs High School
 Ocean Springs Middle School
 Ocean Springs Upper Elementary School
 Overpark Elementary
 Oxford Middle School
 Pass Christian Elementary
 Pass Christian High School
 Pass Road Elementary School

EDUCATION

Pearl Lower Elementary School
Pearl River Central High School
Pecan Elementary School
Pecan Park Elementary School
Perkinston Elementary School
Petal Elementary
Petal High School
Petal Middle School
Petal Primary School
Petal Upper Elementary School
Pierce Street Elementary School
Pineville Elementary School
Pleasant Hill Elementary
Pontotoc Elementary School
Pontotoc Junior High School
Poplarville High School
Popp's Ferry Elementary School
Power Apac School
Quitman County Elementary School
Raymond Elementary School
Ripley Elementary School
Riverside Elementary School
Rosa Scott School
Rouse Elementary

Saltillo Primary School
Saucier Elementary School
Seminary Elementary School
South Forrest Attendance Center
South Hancock Elementary School
South Pontotoc Elementary School
Steen's Creek Elementary
Stone Elementary School
Stonebridge Elementary
Sumrall Elementary School
Thomas Street Elementary School
Union Elementary School
Vanceleav High School
Vanceleav Lower Elementary
Vanceleav Upper Elementary
Waveland Elementary School
West Amory School
West Hancock Elementary School
West Harrison High School
West Lauderdale Elementary School
West Marion Primary School
West Union Attendance Center
West Wortham Elementary and Middle
Woolmarket Elementary School

Four Mississippi Schools Receive National Blue Ribbon School Honors

U.S. Department of Education recognized four Mississippi schools as National Blue Ribbon Schools for 2020. The recognition is based on the schools' overall academic performance or progress in closing achievement gaps among student subgroups. Mississippi's 2020 National Blue Ribbon Schools are Center Hill High School, DeSoto County School District, D'Iberville Elementary School, Harrison County School District, Madison Station Elementary School, Madison County School District, and Popp's Ferry Elementary School, Biloxi School District.

Mississippi Charter Schools

According to the Mississippi Charter School Authorizer website, there are six authorized charter schools currently in existence in Mississippi.





